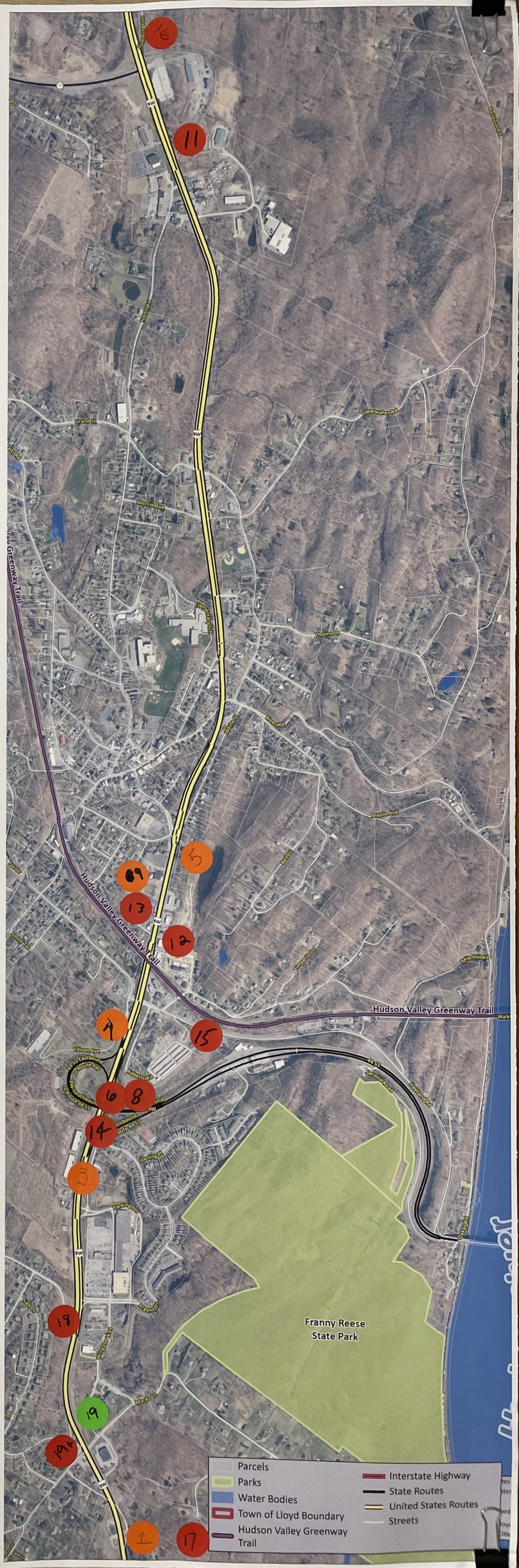


9W:

Help us Improve this Corridor!

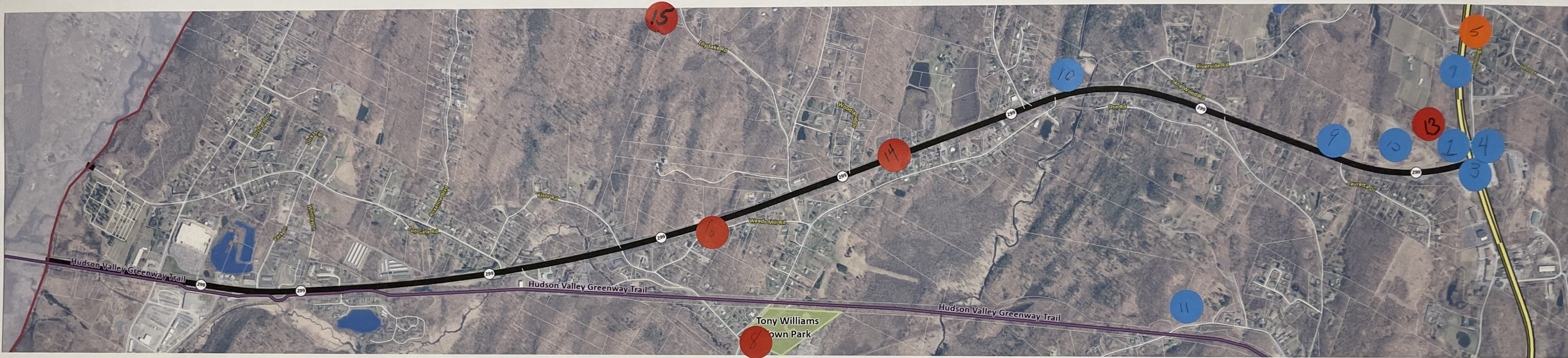
What is needed? Place stickers on the map and add your comments board to the below.

Sticker No.	Comments / Improvements
1	BLUE POINT ROAD SHOULD BE A "WOW" GATEWAY DEVELOPMENT
3	Develop smartly: traffic, attractive landscapes, builds
4	SMART Commercial Growth with high end shops & dining. No more Dollar Generals.
5	LIMIT COMMERCIAL SPRAWL.
6	Work with NY Bridge Authority to expand the Mid-Hudson to alleviate back-ups on both sides
7	Need to upgrade water & sewer for Smart Growth
8	Pedestrian tunnels at MHB on ramp and off ramps. At-grade crossings are dangerous. +1
9	Infill development on abandoned/vacant property
10	NO tunnel. What IS needed is protection of land and Natural Scenery. The old Chevy auto place can be a skate park and restaurant that has concerns of USE the space no need to add anything to it. like the Falcon.
11	AGRI TOURISM FEATURES/BIZ
12	MORE SEWER WATER TOWN TRAIL + 299
13	Takeover low-end and abandoned motels. Too many. Use high visibility crosswalks and push button warning lights to let drivers know people are crossing the ramps to the MHB. Gives a bad look.
14	No tunnel - \$\$\$ maintenance nightmare. Redesign Haviland Rd as a Complete Street
15	
16	REMOVE EYESORES ON 9W NORTH OF 299. REMOVE ESSEX BOULEVARD. ABANDON BUILDINGS w/ CRACKED SIDES etc. JUNKY etc.
17	If this is to be a Smart Growth Comprehensive Plan LIMIT DEVELOPMENT AT BLUE POINT, the so-called HV Wine Village. This is a designated Bio diversity Area and should not be carved up with roads and development. Develop ONLY areas around run down buildings
18	Improve pedestrian safety walking from Highland Hills to Hanford Plaza / Walgreens / Franny Reese / near Stewart's.
19	Improve safety of the short road passing behind Surace to 44/51 from south-bound 9W. If the views development is not happening, can that intersection be reimagined?



Route 299: Help us Improve this Corridor!

What is needed? Place stickers on the map where you would like to see improvements, and add your comments below.



Sticker No.	Services/Improvement	Sticker No.	Services/Improvement
1/2/4	CORNER OF 9W SHOULD BE A GATEWAY PROJECT		
5	REMOVE EYESORES/ABANDONED BUILDINGS ON 9W NORTH OF RT 299		
6	Corridor is very congested need to review & may need to go to four lanes.		
7	I agree with NO 5!		
8	Tony Wms. needs Pickleball!		
9	We need to not add add new development. Use any buildings that already exist. Perhaps up date them to be more efficient and environmentally sound. We should not burden or harm quality of life for people in the town. Developers should be held accountable if they lie.		
10	MAKE THE BLACK CREEK LAUNCH AREA SOME SORT OF NATURE CENTER OR SOME SORT OF ECOTOURISM DESTINATION. ONE THAT BLENDS INTO NATURE		
11	MORE SPEED CONTROLS ON AREA SIDE ROADS (NEW PALTZ RD E.G.)		
12	Area seemingly has no purpose. Seems like a great spot to add a solar farm.		
13	Mixed use, multi story (3-4) development here		
14	Needs better sign control		
15	Solar Farm @ Landfill site		

ECONOMIC DEVELOPMENT

The Town of Lloyd is in the process of evaluating potential economic development priorities. To assist with this process, please select your top three (3) economic development priorities/types of development that should be pursued.

PRIORITIES

1	2	3	
			Agritourism (see definition below)
			Hotels and other Accommodations
			Light Industry/Light Manufacturing (see definition below)
			Professional/Medical Offices
			Recreation and Ecotourism (see definition below)
			Renewable Energy (see definition below)
			Research and Development
			Retail
			Waterfront Commercial, Entertainment and Tourism
			Others

Recreation and Ecotourism: Tourism centered around environmentally responsible travel to natural areas in order to enjoy and appreciate nature and accompanying cultural features that promote conservation.

Agritourism: Tourism based around agriculture with farms and related facilities as travel destinations for educational, recreational and entertainment purposes including wineries, farm-to-table, orchards, farm work experience, and pick-your-own operations.

Light Industry/Light Manufacturing: Low impact Manufacturing, processing, creating, renovating, painting, cleaning, assembly of goods, merchandise, food processing, or other industrial uses that are operated in a manner that prevents external effects.

Renewable Energy: Utility-scaled solar and wind facilities.

Highland Hamlet: Help us Improve the Hamlet!

Are there special and unique places in Highland Hamlet that we should enhance or take special care to protect? Maybe a special building, or destination? Is there something missing? Use the numbered dots provided, place it on the map, and share your comments.

Destinations (Sticker No.)	Services/Improvements in this area:	Destinations (Sticker No.)	Services/Improvements in this area:
1	Improve signage to identify the Hamlet business district.	17	SIDEWALK ON NEW PALTZ RD TO HAMLET
2	BEYO HOUSE SHOULD BE IMPROVED/RESTORED	18	SIDEWALK ON COMMERCIAL AVE TO HAMLET } OR WALK/BIKE LANE
3	USE OLD PRATT'S LUMBERYARD	19	INFILL DEVELOPMENT, NOT MORE CLEARING OF OPEN SPACE +1
4	OVERALL AESTHETICS		
5	Town facade & Lighting		
6	Plan new housing more carefully - homes are way too close +1		
7	Direct Connection from Empire Rail Trail to Downtown. ●		
8.	Farmer's Market		
9.	Downtown outside (Dining) furniture should have some unity not haphazard!		
10	Add more hiking trails		
	We should protect the unique greenery we have, i.e. trees and land. No 5 story buildings. We should over develop. Concrete and asphalt isn't beautiful, that belongs in NYC. Any development should be 90% renewable resources.		
12	Staircase/ramp from rail trail to East side of 9th - preferably near Dollar store or those apartments		
13	MORE WELCOMING STREETScape - COORD BTWN BIZ + EVENTS		
14	FARMER'S MARKET ●		
15	Too Much Density in BLD Master Plan - LESS DENSE DENSE Housing +1		
16	ROUNDAABOUT / TRAFFIC CALMING ●		

Highland Hamlet: Help us Improve the Hamlet!

Are there special places in the Highland that we should enhance or protect? Maybe a building, or destination? Is there something missing? Using the numbered dots, place it on the map.



What types of new housing are needed in Lloyd?

Almost 75% of the respondents of the survey indicated that more housing choices were needed. Share your ideas below.

Housing Types

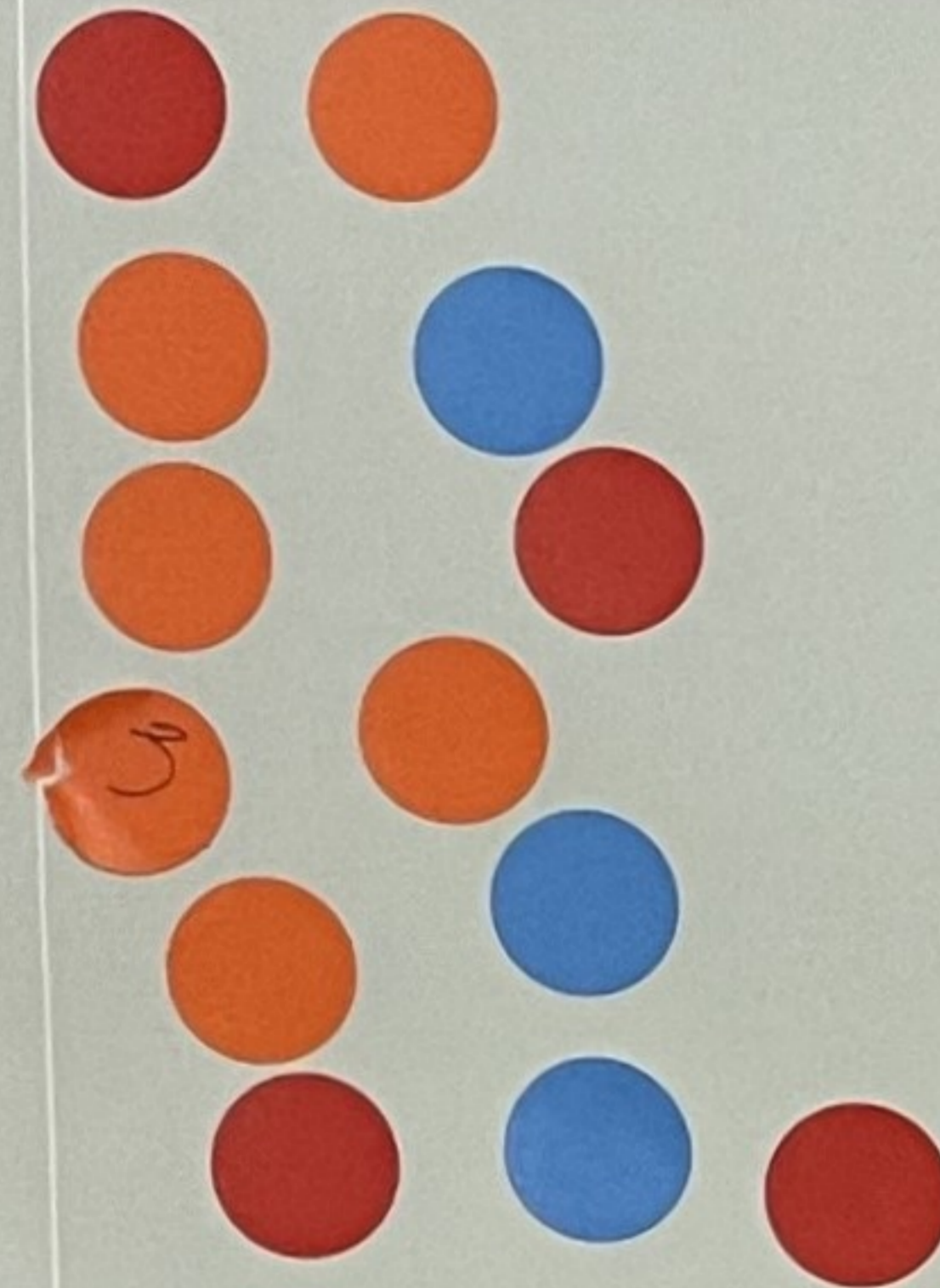
Place Stickers & Comments

Housing Types

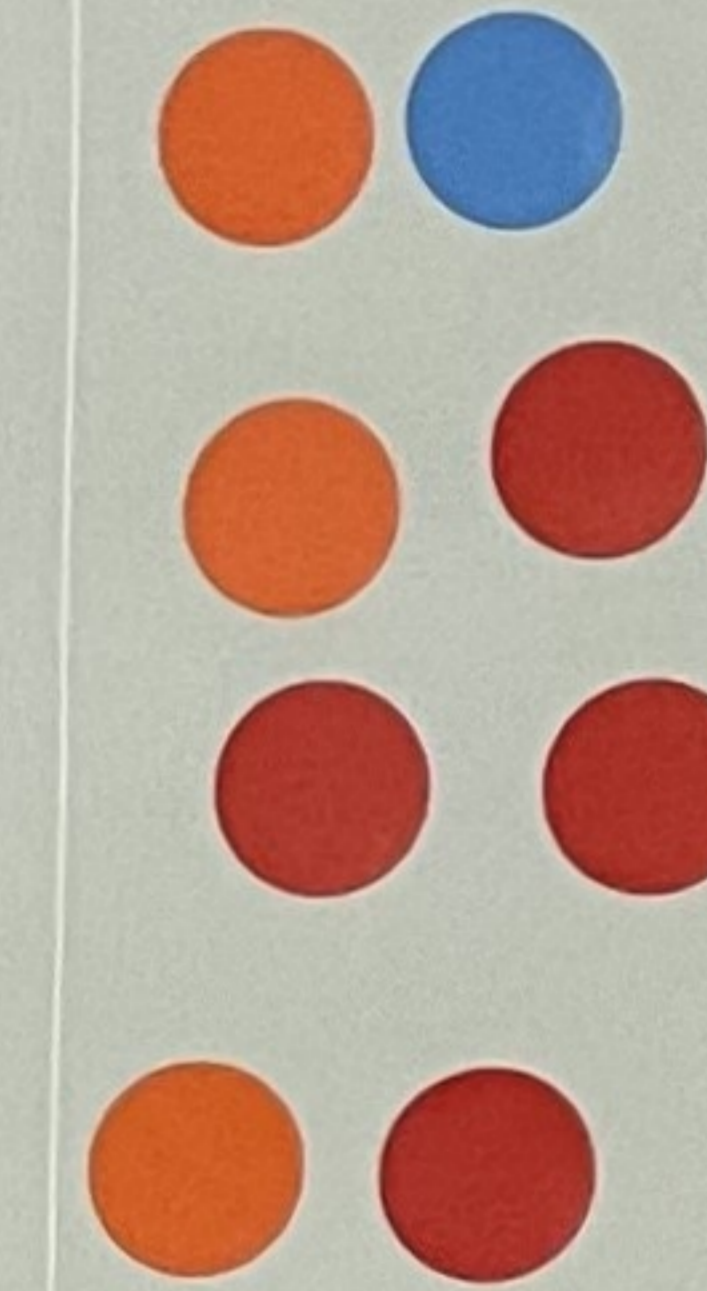
Place Stickers & Comments



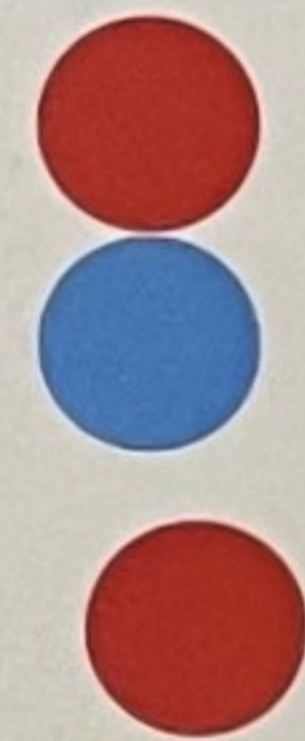
Accessory Apartments



Small Apartment building 6-12 units



Townhouses



Larger condominium or apartment buildings
12+ units



Garden Apartments 4-6 units



Other Suggestions: *affordable*
 - Too Much Density now / Commercial Growth needed
 NO MORE LARGE DEVELOPMENTS
 NO more Large Development, Stop Killing our birds and taking our trees!
 No more large developments
 NO MORE large developments

No more large developments especially at the edge of town e.g. Falcon Ridge; HV Wine Village

Make sure new housing has green space nearby for residents

Help us Redesign Design the Village Field Park

Place a sticker for the amenities desired in the Park or share other ideas on the map a sticky note.

Amenities	Place Stickers	Amenities	Place Stickers
1. ENTERTAINMENT SPACES		2. ACTIVE SPORTS	
Pavilion, Gazebo		Basketball Court, Tennis Court	
Picnic Area		Temporary Ice Rink, Skateboard Park,	
Open Area For Events		Pickleball Court, Bocci Courts	
Outdoor Performance Stage		Baseball Field <i>Skateboard Park</i>	
3. PERMANENT STRUCTURES		4. PLAY AREAS	
Restrooms + Storage		SPLASH Pad PARK	
Parking Lot With EV Stations		Playground (5 And Up)	
Improved Lighting		Tot Playground (Under 5)	
5. Landscape Improvements		6. Aesthetic Improvements	
Defined Trail, Walking Paths with Furnishing		Public Art, Decorative Water Fountain	
Improved Landscaping		Chess Tables	
Community Garden		Formal Garden	

Help us Redesign the Village Field Park!

The Town would like to activate this park and add amenities. Share additional ideas on a sticky note below.



IDEAS

Farmers Mkt would be great

Pavilion + outdoor performance space
" w/ Restrooms

Farmers Market

Leave it
we already have a well functioning field for activities, ie, fireworks, games, events

Outdoor exercise equipment to complement walking trails - pull up bars, etc

Nice big playground so parents of young children don't need to drive to New Paltz

Dog Park

Upgrade parking Farmers market Events/music

add native trees + plants to benefit pollinators

Farmers market

1 - Signage for EV Chargers

Places and Spaces

Place a dot on the map, and tell us about the location: Is it in need of improvement, is it a place that should be preserved? Is this a good place for a cultural, art or music event? Is there a place where you would like a trail connection? Tell us why.

Sticker No.	Please place a dot on the map and tell us why.	Sticker No.	Please place a dot on the map and tell us why.
1	Vintage Village - Reuse opportunity - 4 Bldg - rail trail siding X 3	17 x 2	Lights @ Tony Williams Park (enhance screen) ^{ball field} also playground enhance area (accessibility upgrades) & between @ 17
2	Mariner's vicinity - needs infra investments - dockage ^{li} Commercial opportunity (restate #3)	18	Reuse/redevelop nonresidential properties on JW, especially by core
3	Ittini Mtn - more cultural programming; tourism/agritourism attraction		
4	Rte 9W - Reuse opportunities - non-res in corridor		
5	Falcoln Ridge housing development (proposed) should have conserv. design @ perpetually stewarded open space (sect 106 consider need performance)		
6	Esopus - Loop area of statewide scenic significance		
7	Potential parking / trail head connection @ Burroughs linear		
8	Mountainside Woods - gated road - could need to access rail trail		
9	North Rd - some lots lack sewer connections		
10	Former orchard ^{near bluff} - needs guided growth plan @ fiscal plan/maintenance traits & wildlife conservation. (preferably conserved)		
11	Mariner's site has so much economic development/cultural development potential. X3 (either conserved or new buildings)		
12	PRESERVE AG LAND/LIMIT ENCRoACHING DEVELOPMENT ON ILLINOIS AVE		
13	likes notion of views management/scenic views.		
14	likes idea of Black creek environs conservation		
No dot	WOULD like more informative Town website		
15	need/opportunity for access on/over 9W for Bike Ped (tunnel?)		
16	Recreation opportunity - such as skating rink		

Places & Spaces Map

Open Space

- Agricultural Assets
- Unique Landscapes
- Viewsheds

Cultural

- Music /Concerts
- Craft Fairs
- Fine Arts Events
- Educational Workshops/Programs

Connections

- Bike Paths
- Boat Launch
- Sidewalks
- Trails

Economic Opportunities

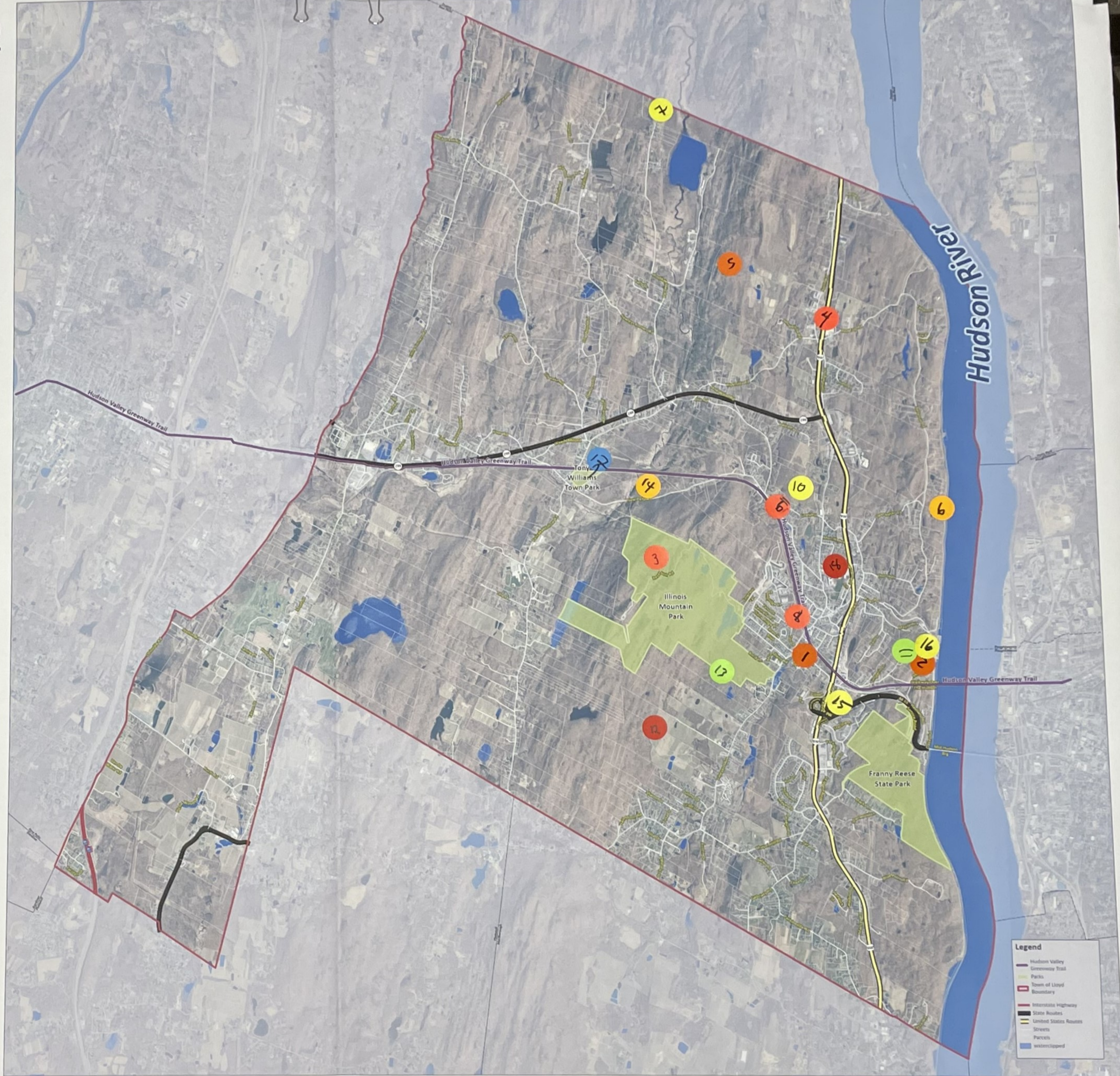
- Agritourism
- Entertainment
- Light Industry
- Professional Offices
- Retail

Housing

- Apartments
- Senior Housing
- Townhouses

Infrastructure

- Sewer
- Water



Legend

- Hudson Valley Greenway Trail
- Parks
- Town of Lloyd Boundary
- Interstate Highway
- State Routes
- United States Routes
- Streets
- Parcels
- Water/Clipped



Town of Lloyd Vision Statement

The Town of Lloyd is a gateway and major regional center for Ulster County, and provides a unique opportunity to connect with other communities. In addition, the Town's scenic and built character underpin a strong sense of place and create enjoyable diversity. This diversity is embodied by the current path of the Hudson Valley Rail Trail: Hikers and cyclists can enter the Town from the Hudson Walkway, then travel past modern development on 9W, then cross through to the historical hamlet of Highland, and finally into the rolling rural landscapes of the historical farmlands to the west before reaching the westernmost border of the Town. It is important to preserve the character of these spaces, even as they are connected, so that open space is conserved, and future opportunities for growth are realized in an efficient and equitable way. Although it is expected that the majority and growth of the Town will be within its population centers, preserving and conserving Lloyd's open spaces and forests can also provide a rich diversity of recreation options, attracting tourists, and bringing new agri-business opportunities to support farms.

The Town recognizes that new growth in existing developed areas would benefit from reimagining, so that sewer, water, and road infrastructure can be efficiently developed, and paths for mass transit, biking and walking are clearly defined as they are created. The path to more efficient land use development is not only consistent with promoting healthy interactions between residents, visitors, and the business community, it is consistent with conserving rural character which includes wild, open, and agricultural areas.

New targeted growth in the Hamlet and along the Town's two commercial corridors will create opportunities for significant economic growth, providing jobs and tables that support the development of the community. Redevelopment of the Hamlet and the 9W corridor include a diversified housing supply that will support all members of the community. The bolstering of mixed-use within the existing hamlet and 9W corridor will enliven these areas allowing residents to live nearer to businesses and services. A sense of place can be achieved with distinguishing architecture and coherent patterns of development, matched by careful infrastructure investment, supporting resiliency. Linking targeted growth investments to complete streets will provide the foundation for a balanced live/work environment, creating the ability to easily walk, bicycle and take transit to destinations. The 299 corridor has the potential for new development oriented toward commercial and clean industrial uses. Sensitive environmental features in this corridor could be used as visual and recreational assets if preserved for the community's benefit.

Within this celebrated landscape comprised of developed and conserved areas, the community and its visitors can continue to enjoy its diverse commercial, service, cultural, and recreational destinations that the Town of Lloyd has to offer. Quality infill will emerge along Route 9W, especially by the Rail Trail, with new street and trail connections along the strip, arranged to aid community livability, and reinforcing a central role for both the hamlet and 9W corridor. The Town recognizes that all commercial areas are important to the future of the Town, and forging identities for these areas is critical to their success. Current and future generations will benefit from focused investments in water and sewer, energy, and green infrastructure, leveraging community sustainability and helping manage and reduce potential hazards of climate change, whether it be from severe heat, sea level rise, flooding, or other risks.

Please provide your comments here :

EQUITABLE COMMERCIALISM → OPPORTUNITY TO OPEN BIZ FOR ALL ENTREPRENEURS & BIZ OWNERS — NOT BIZ BOX

(INCLUDING HISTORICALLY DISADVANTAGED PEOPLE FROM OVERLOOKED COMMUNITIES)

The vision statement is great, but we need to better advertise this vision to those outside the community.

We get lots of visitors, but they typically come for one purpose (ie walking) and then leave. We need a better way into the town from the Rail Trail - as a Walkway Ambassador, it's not easy to tell visitors how to get into the downtown.

Highlands Slogan and what realtors should tell potential buyers is "Enjoy the view while you have it, because it will be gone tomorrow!" Highland must preserve our Natural Wonders and Open Spaces. We should not allow developers to clear the land unless given permission because a project is happening. Any development must include green energy, add to the community, and developer must be responsible of replacing trees native to the land and must ensure that trees Survival for 5+ years. Highland isn't just a scenic view!

HIGHLAND SHOULD DEVELOP NEW WAYS FOR VISITORS TO STOP WHILE WALKING IN THE TOWN I.E. BETTER SIGNAGE TO DIRECTIONAL ADAPTATION, CAMPFIRE(S) TO STAY OVERNIGHT, ETC. MANY LONG DISTANCE BIKE RIDERS USE THE TRAIL AND STOP & STAY ALONG THE TRAIL. WHY NOT INJUNCTION??

Better bikes/ped facilities

More or Less Like a Gateway, NOT A Commercial Strip. Do we want another corridor like RT9 in Whippany? →

Don't allow "regional center for Ulster County" be national for large-scale development.

Capitalize on nature-based assets. - trails, parks, mountain, forests for nature-oriented recreation

Direct growth to hamlet and corridors -- no large-scale developments at the edge of town

Bicycle Tourism
Cyclists find the city need hotels - many will take the train to POK and ride to New Paltz and Minerva.

Farmers market or peddlers only on Saturdays on Vingard Ave between Milton Ave and Main St.