

# Village of Port Henry

*Dissolution Plan*

April 5, 2016



Laberge  
ENGINEERING  
ARCHITECTURE



Group  
SURVEYING  
PLANNING

Please Sign-in

# Introductions

## Laberge Group

Nicole T. Allen, AICP, Planning Services Manager

Rebecca M. Yanus, Junior Planner

## Public Signals, LLC

John W. Rodat, President



# Agenda

- Public Meeting Rules
- How did we get here?
- The Dissolution Plan Process
- Village Personnel & Local Laws
- Services and Special Districts
- Disposition of Village Assets and Liabilities
- Village Fund Balance and Indebtedness
- How Were Cost Savings Determined?
- Projected Tax Impacts
- Next Steps
- Public Comments



# Public Meeting Rules

- Please sign up to speak
- Speakers will be selected in order from the sign-in sheet
- Comments will be received at the end of the presentation
- Each person will have 5 minutes to speak



# How Did We Get Here?

- **June 25, 2015:** Petition for Dissolution to the Village Clerk.
  - The petition contained 112 valid signatures out of 144.
- **July 2, 2015:** Village Clerk reviewed and certified the petition.
- **July 31, 2015:** The Village Board of Trustees passed a resolution calling for a Referendum on the proposed Dissolution.
- **October 27, 2015:** Referendum for dissolution approved by majority of qualified Village voters 190 to 171.
- **November 4, 2015:** Village Board meeting held.
- **November 19, 2015 – February 3, 2016:** Village and Town Liaisons, Village personnel interviews, Fire Department/District meetings (5 meetings).
- **February 22, 2016:** Village Board accepted proposed dissolution plan draft report and set a date for the public hearing (April 5).

# Dissolution Vs. Consolidation

	Dissolution	Consolidation
<b>Definition</b>	The termination of a local government entity.	The elimination of the original governments and the forming of a new local government entity or the merger of one surviving government entity with the other absorbed into it.
<b>Services</b>	May end or be assumed by another local government entity that may provide the service at the same or different level.	May eliminate both entity's services and form new government services or retain one government entity's services and absorb additional services from the other entity.
<b>Documents</b>	Dissolution Plan - Contains the terms and information regarding the dissolution of a local government entity.	Consolidation Plan - Both the Town and Village get to vote on the plan.

*Note: \* This plan only looks at the Dissolution of the Village of Port Henry*

# Overview of the Dissolution Plan Process

## ➤ Before the Referendum

- A public kick-off meeting was held August 18, 2015.
- Village and Town officials and staff have been interviewed.
- Public Information Meetings held on September 23, 2015 & October 21, 2015 (today).
- Interim Report (available today) & pamphlet (mailed & available online).
- Information is available on the Village/Town Website or [labergegroup.com/PortHenry/](http://labergegroup.com/PortHenry/)
- Grant Awarded (\$50,000) for Citizens Re -Organization Empowerment Grant (CREG) Expedited Assistance Program.

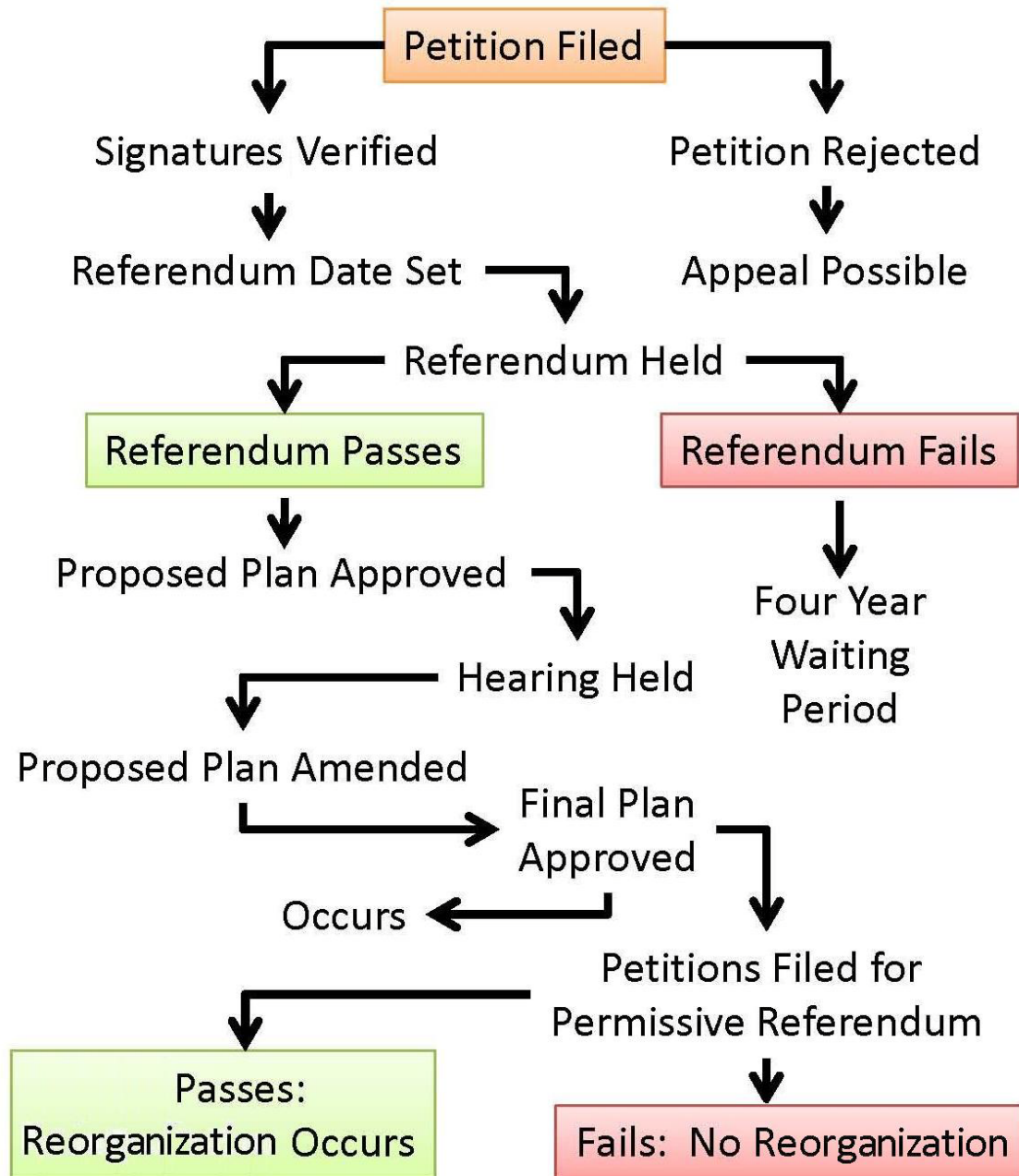
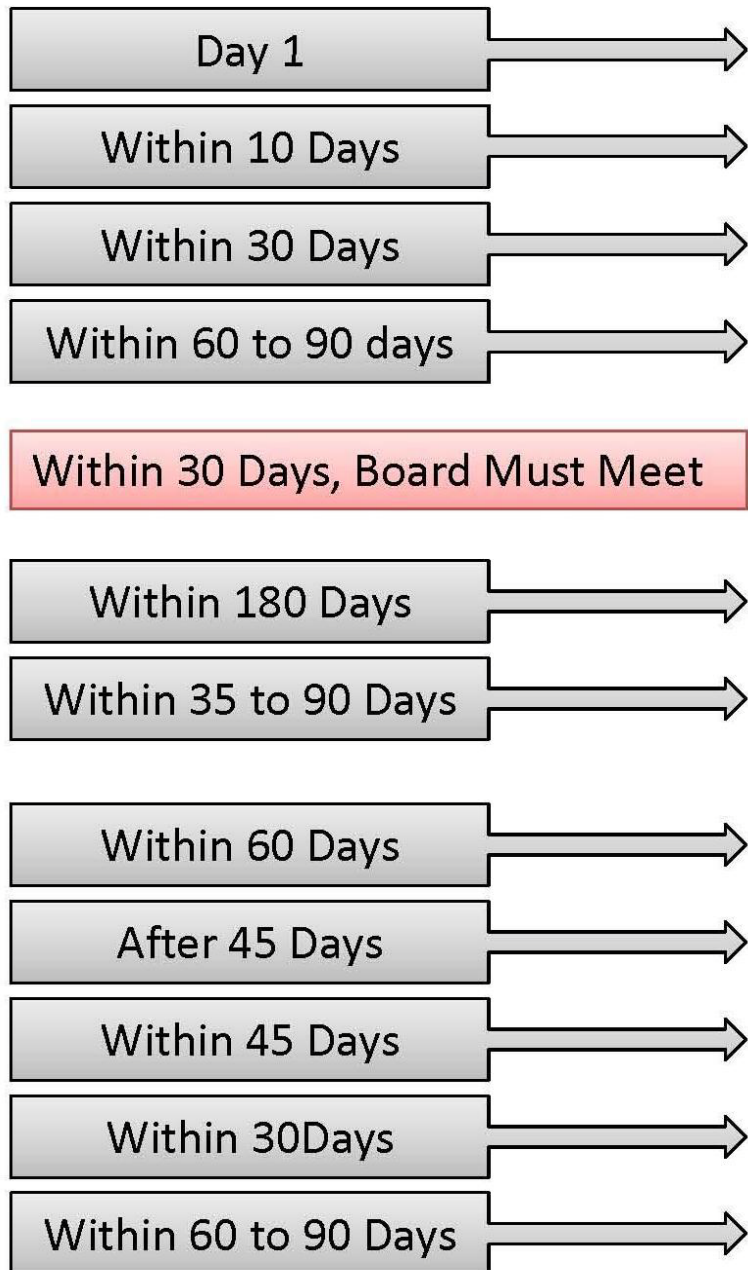
# Overview of the Dissolution Plan Process

## ➤ After the Referendum

- The vote was “YES,” the Board has 180 days to develop and approve the Dissolution Plan, 90 more days to hold hearings, and within 60 days to finalize the plan.
- The Final Dissolution Plan is Subject to Permissive Referendum.



# Voter-Initiated



# How Will My Services Change?

# Expenses to General Services

General Service:	Post Dissolution Conditions <sup>1</sup>	Cost Increases to Town
<b>Mayor</b>	Part-time position will be abolished. All duties to transfer to Town Supervisor. No additional expenses associated.	<b>\$0.0</b>
<b>Village Board of Trustees</b>	The Village Board of Trustees will be abolished. All duties transfer to the Town Board. No additional expenses associated.	<b>\$0.0</b>
<b>Clerk &amp; Treasurer</b>	One FT positions will be added to Town for a Clerk/Accountant Clerk and extra help during the tax season. The Treasurers position will be abolished. Salary adjustments will be at the Town Board's discretion.	<b>\$29,052.16</b>
<b>Attorney for the Village</b>	Duties will be absorbed by the Town Attorney. No additional expenses associated.	<b>\$0.0</b>
<b>Election Inspectors</b>	Duties will be absorbed by Town Election Inspectors. No additional expenses associated.	<b>\$0.0</b>

# Expenses to General Services

General Service:	Post Dissolution Conditions <sup>1</sup>	Cost Increases to Town
<b>Village Hall</b>	Village Hall will become Town property. Operation & maintenance costs will continue.	<b>\$15,250</b>
<b>Special Items/Contingency</b>	<p>The Village budgets \$18,555 for unallocated insurance (special items), \$1,026 for dues (special items). Insurance would be reduced and dues eliminated for a savings of (\$10,303).</p> <p>\$9,278 of unallocated insurance will be added to Town. \$20,000 of contingency funds will be added to the Town.</p>	<b>\$29,278</b>
<b>Code Enforcement</b>	<p>Duties of Building Inspector will be added to the Town's Building Inspector duties.</p> <p>It is recommended that the Town Code Enforcement budget be increased to account for the additional workload brought on by the Village.</p>	<b>\$8,533</b>
<b>Street Maintenance and Permanent Improvements</b>	Funds will be included in the Town's Highway future budget for the continuation of services. Expenses include administration, personal services, contractual work, and permanent improvements.	<b>\$143,500</b>

# Expenses to General Services

<b>General Service:</b>	<b>Post Dissolution Conditions<sup>1</sup></b>	<b>Cost Change to Town</b>
<b>Community Environment</b>	Funds will be included in the Town's future budget. Expenses include flowers, signs, and landscaping improvements.	<b>\$500</b>
<b>Street Lighting</b>	Electricity and maintenance expenses associated with the Village's street lights will be transferred to the Town.	<b>\$27,000</b>
<b>Snow Removal</b>	Funds will be included in the Town's future budget for snow removal services and salt expenses, including previously owned Village properties.	<b>\$30,000</b>
<b>Recreation and Campground</b>	The Village budget for Champ RV Park includes personal services, equipment, contractual expenses, joint recreation projects, and youth programs. Funds will be included for the continuation of recreation services.	<b>\$47,600</b>
<b>Culture</b>	Library, historian, and annual celebrations; the funds will be added to the Town expenditures.	<b>\$7,100</b>
<b>Sidewalk</b>	Expenses associated with Village sidewalk maintenance and snow removal will be transferred to the Town. Sidewalks will be maintained along Main Street from Whitney Street to the Village line on North Main Street and Broad Street.	<b>\$2,500*</b>

# Expenses to General Services

General Service:	Post Dissolution Conditions <sup>1</sup>	Cost Change to Town
<b>Sanitation</b>	The services associated with the Village garbage and recycling pick-up will be abolished.	<b>\$0</b>
<b>Highway</b>	Three Village employees will be transferred to the Town's Highway Department. Costs associated with salary will be transferred to the Town's Highway Fund. Salary adjustments will be at the Town Board's discretion.	<b>\$96,951</b>
<b>Buildings and Grounds</b>	One Village employee will be transferred to the Town's Building and Grounds Department. Costs associated with salary will be transferred to the Town's General Fund. Salary adjustments will be at the Town Board's discretion.	<b>\$46,181</b>
<b>Employee Benefits &amp; Taxes</b>	These expenses include state retirement, social security, worker's compensation, disability, and medical insurance. These benefits will be transferred to the Town's general and DPW budgets upon dissolution.	<b>\$172,979</b>
<b>Total New to Town Budget</b>		<b>\$656,424</b>

Notes:  
\*Village budgeted \$7,500 for sidewalks. However this includes \$5,000 for personal services which have been allocated to the three highway positions going to the Town's highway department. The remaining \$2,500 is for the sidewalk repair and will be added to the Town's budget.

# Expenses to Special Districts

Special District Service:	Post Dissolution Conditions <sup>1</sup>	Cost Change to Village Residents
Joint Public Sewer	The Village budget includes an Engineer which is paid \$5,000. The Villages Joint account include the Village paying 35% of special items which include unallocated insurance at \$11,500, dues at \$500, and contingent account allocated at \$15,000. Two employees operate the treatment plant. The Village's overall joint sewer system budget is currently \$201,132 for maintenance, expenses, fees, equipment, utilities, and taxes; for the total sewer expenditures of \$259,091. Of which \$95,000 paid by Village (35%). <sup>3</sup>	\$577,981 <sup>3</sup>
Village Public Sewer	The Village of Port Henry is currently beginning a two phase Sewer Improvement Project. The first phase is completely paid off by a \$500,000 grant. The second phase has been partially paid for and will include a loan which comes to \$1,046,063. This project is not accounted for in the 2015-2016 Village Budget. The loan will only be charged to residents within the Village. A special Debt District will be created in the outcome of dissolution. <sup>3</sup>	\$1,046,063
Public Water	The current budget for Village water totals to \$296,710. The water service area will be reconstituted as Water District #3 in the outcome of Village dissolution. <sup>3</sup>	\$285,092 <sup>3</sup>

# Expenses to Special Districts

Special District Service:	Post Dissolution Conditions <sup>1</sup>	Cost Change to Village Residents
Fire District	The Village Fire Department has a budget of \$108,945. The Town and Village will create a joint Town/Village Fire District. The Fire District will cover the former Village boundaries and the fire protection areas north and south of the Village. The joint Town/Village Fire District will have five fire commissioners appointed by the Town and Village. The Fire District's Fire House will remain at the former Village's Fire House and will maintain its identity and equipment.	\$127,000
Debt	Expenses associated with Village debt include any general existing debt in the Village and will be paid through a special taxing district by residents within the former Village boundaries.	\$56,980
<b>Total Special Tax District Budget</b>		<b>\$2,093,116</b>

- Notes:
1. Upon dissolution, the Town Board may re-consider the options presented above, and conclude that there are other preferred options that are in the best interest of the community at large.
  2. A special taxing district is not a governing body; rather it is a taxing mechanism to properties which receive additional services within the Town.
  3. Public sewer and public water are based on additional fees and will continue to be an extra charge in the case of dissolution.



# Revenues to General Services

Service:	Post Dissolution Conditions <sup>1</sup>	Revenue Change to Town
<b>Real Property Tax &amp; Tax Items</b>	Payments in lieu of taxes (PILOTS) and interest and penalties on real property tax.	<b>(\$22,000)</b>
<b>Non-Property Taxes</b>	Non-Property Tax Distribution by County and Franchises will be gained by the Town in the outcome of Village dissolution.	<b>(\$50,000)</b>
<b>General Government Fees</b>	Clerk Fees.	<b>(\$125)</b>
<b>Health</b>	Funds from vital statistic fees.	<b>(\$300)</b>
<b>Culture and Recreation</b>	Park and recreational charges and special recreational facility charges.	<b>(\$104,000)</b>

# Revenues to General Services

Service:	Post Dissolution Conditions <sup>1</sup>	Revenue Change to Town
<b>Intergovernmental Charges</b>	The Town contracts for fire protection services for areas of the Town of Moriah that fall outside of the fire department and district's boundaries. The Village's Fire Department is paid \$26,000 for fire protection services.	<b>(\$0.0)</b>
<b>Use of Money and Property</b>	Interest and earnings and rental of real property funds.	<b>(\$5,825)</b>
<b>Licenses and Permits</b>	Bingo licenses and permits.	<b>(\$850)</b>
<b>State Aid</b>	State revenue sharing (per capita) at \$11,500, mortgage tax at \$3,500, other governmental aid at \$1,000, and consolidated highway aid at \$72,000.	<b>(\$88,000)</b>
<b>Total New Revenues to Town</b>		<b>\$271,100</b>

# Summary of Estimated Cost Shift

## Summary of Budget Shift to Town (Expenditures & Revenues)

Total New Town Expenditures	\$656,424.16
Total New Town Revenues	(\$271,100.00)
Total New Special Districts	\$2,093,116.00
<b>Total Cost Shift to Town (excluding Special Districts)</b>	<b>\$385,324.16</b>

- In the result of dissolution, the table above displays the new expenditures and revenues that the Town will acquire from the Village.
- Dependent on the Town Board, additional Special Taxing Districts will be added to former residents living within the Village boundary.

# Village Personnel & Local Laws

# Village Personnel & Local Laws

*The following positions are eliminated & services will be provided by the Town:*

- Village Mayor & Board of Trustees
- Village Treasurer
- Village Attorney
- Elections Inspector
- Code Enforcement Officer
- Zoning Board



# Village Personnel & Local Laws

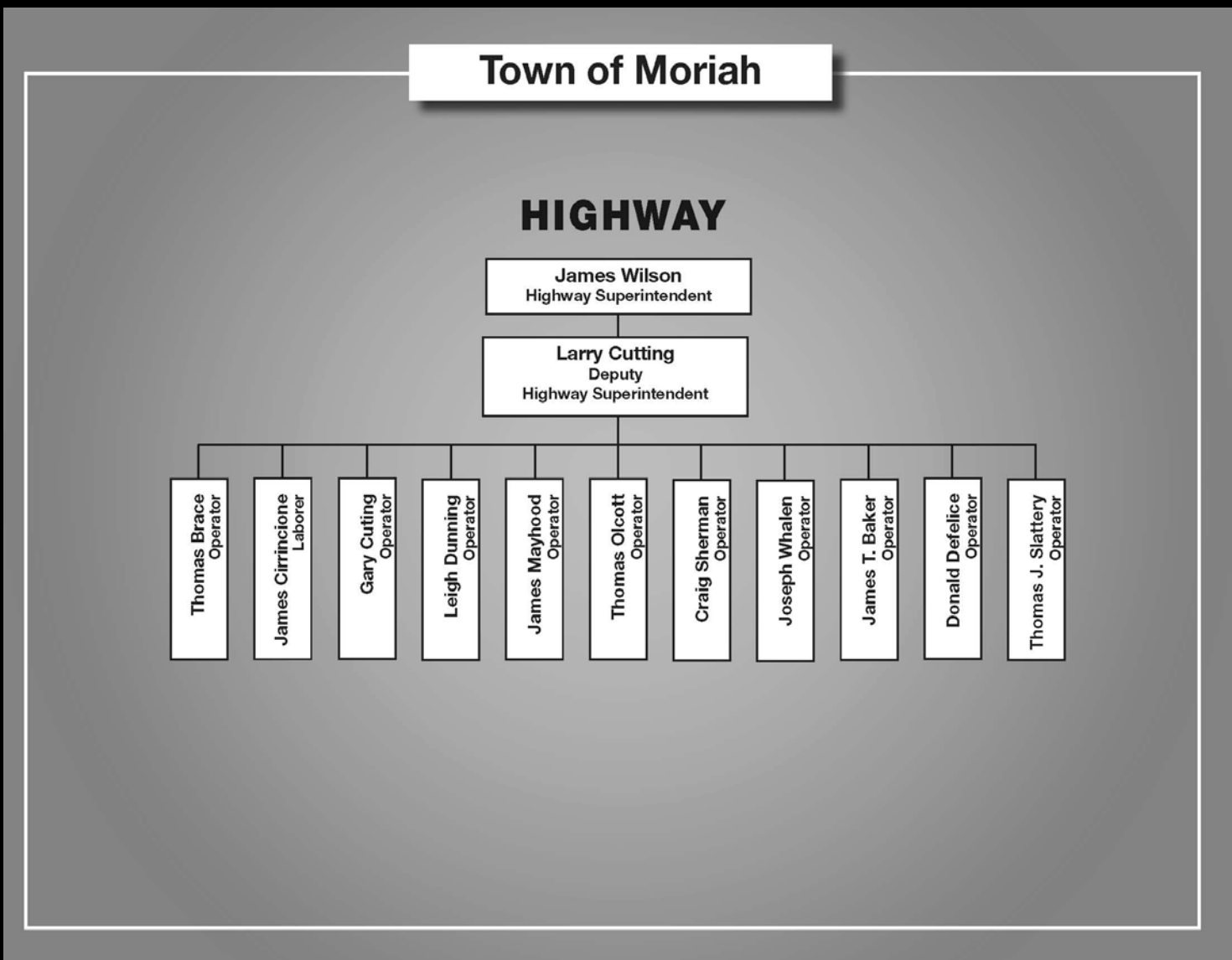
*The following positions will be transferred to the Town:*

- 1 Village Clerk
- 5 Village DPW
- 2 Village Water/Sewer/WWTP
- PT Beach/Campground

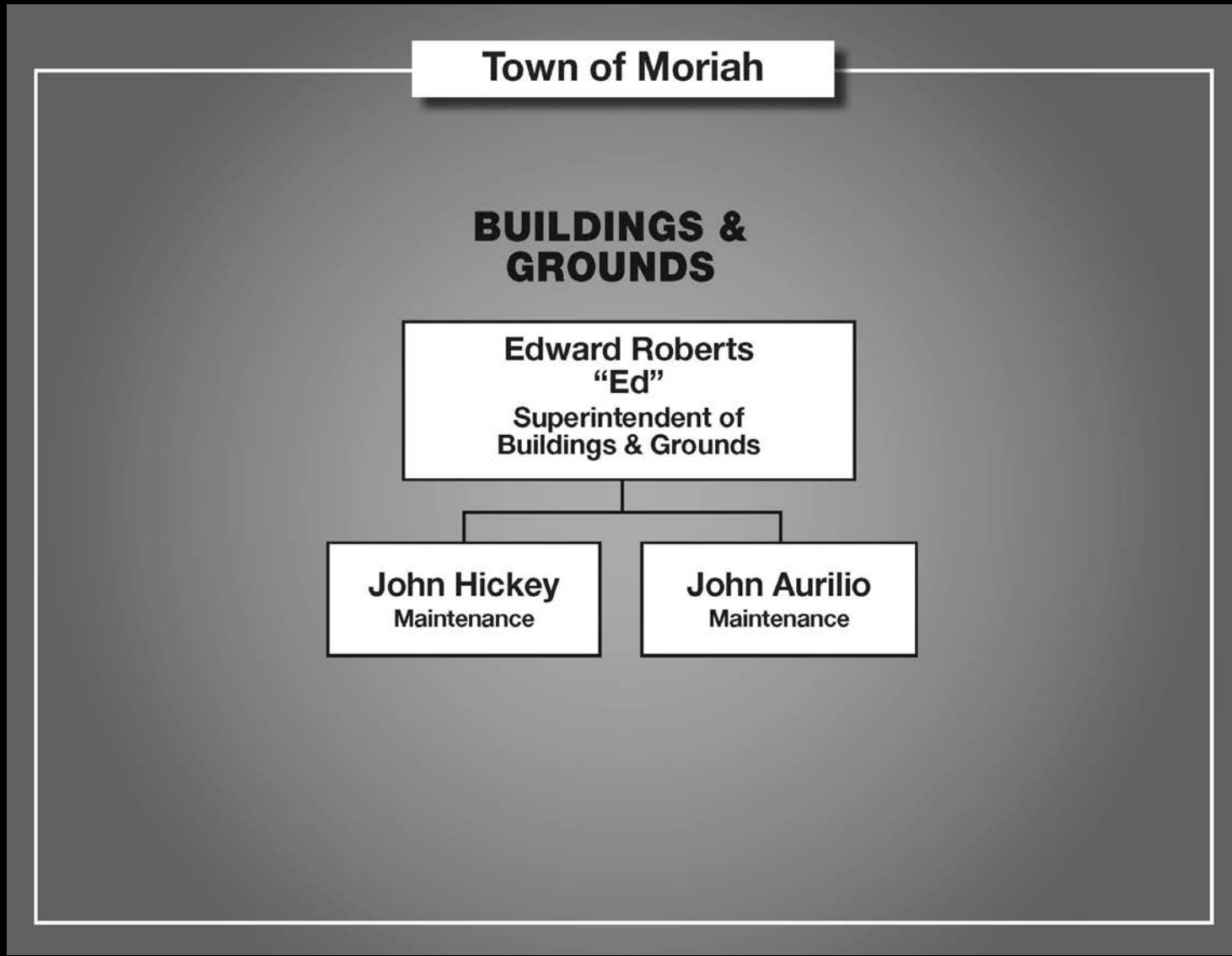


*Organizational work charts have been created to depict where Village employees will be placed once their position is transferred to the Town:*

# Village Personnel & Local Laws

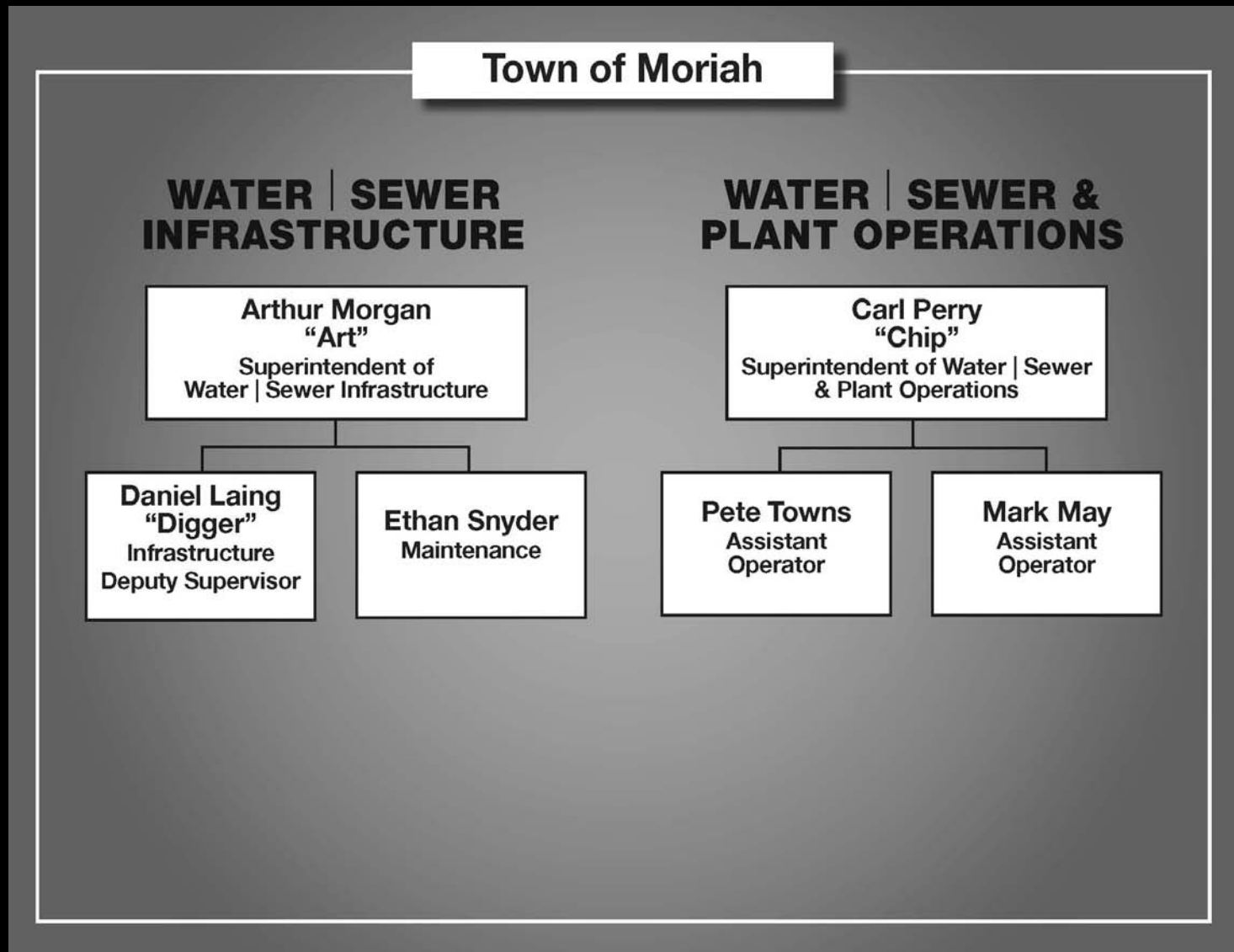


# Village Personnel & Local Laws





# Village Personnel & Local Laws



# Village Personnel & Local Laws

## *Local Laws, Plans, Boards, and Commissions*

- Town Board shall have the power to review, adopt, amend or repeal Village local laws.
- All Village local laws, ordinances, rules or regulations, in effect on the date of dissolution shall remain effective for a period of two years following dissolution.
- If no action is taken by the Town Board within the two year period, the law(s) will be automatically repealed.
- It is recommended that the Town adopt the Village's Zoning Law and Parking Law and develop a more stringent Fire Burning Law.

# Services and Special Districts

# Services

## *The following services will continue to be provided by the Town:*

- Street Maintenance and Permanent Improvements
- Sidewalk Maintenance and snow removal – Snow removal will take place along Main Street from Whitney Street to the Village line on North Main Street to Broad Street.
- Street Lighting
- Snow Removal
- Culture and Recreation

## *The following services will NOT continue to be provided by the Town:*

- Sanitation – Garbage and recycling pick-up will no longer exist.

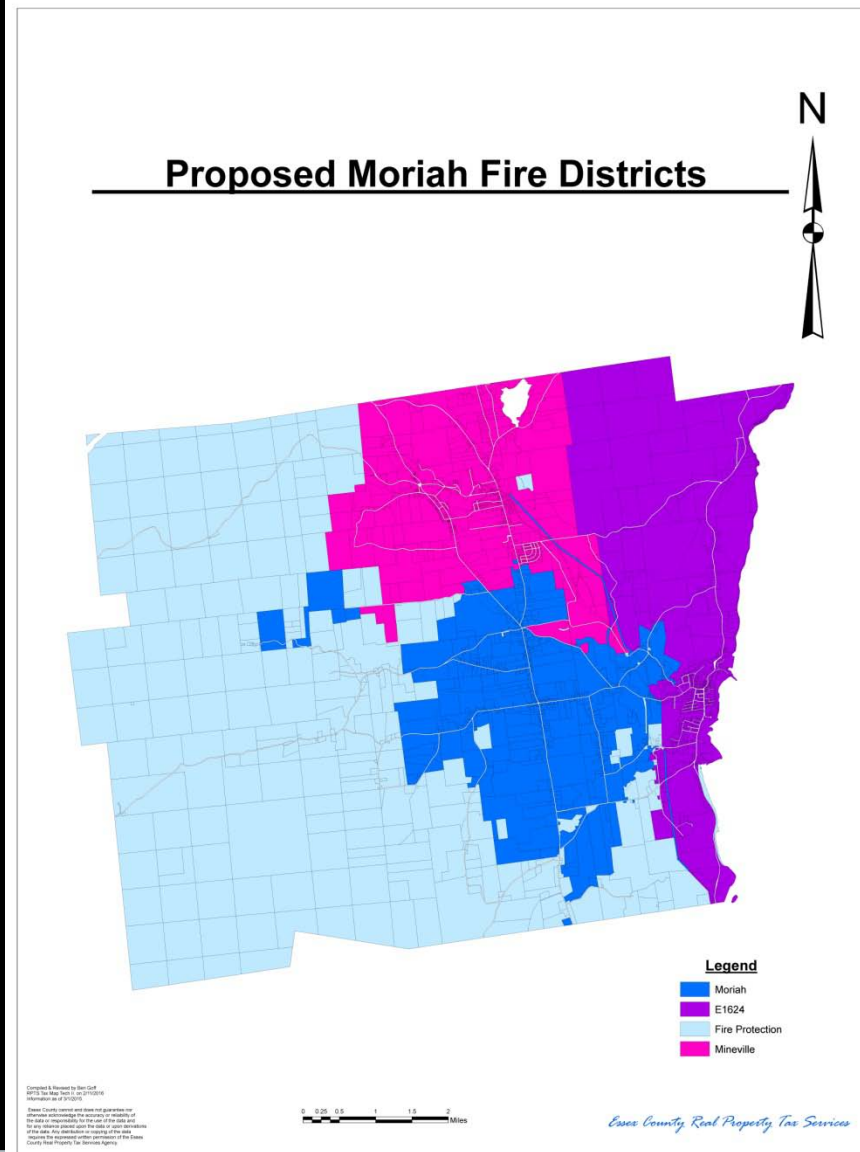
# Special Districts

## Fire

- Upon dissolution, the best option to maintain the Village Fire Department's identity, current location, and current equipment is to create a Joint Town/Village (T/V) Fire District.
- The Joint T/V Fire District will serve the former Village boundaries, including the Fire Protection areas north and south of the Village.
- Five fire commissioners will be appointed by the Town and Village.
- The New Fire District's budget will be \$127,000.

Port Henry Fire District #3	
Equipment	\$27,341
Operations	\$14,000
Utilities	\$26,000
Liability Insurance	\$13,500
Accountant Fees	\$5,000
Capital Reserve Equipment	\$7,279
Capital Reserve Truck	\$16,280
Maintenance	\$6,500
Workers' Comp. Insurance	\$11,000
<b>Amount to be Raised</b>	<b>\$127,000</b>
<b>Taxable Value</b>	<b>81,046,865</b>
<b>Tax Rate</b>	<b>\$1.57/1,000</b>

# Special Districts



# Special Districts

## Water

- Village residents will continue to receive their drinking water from the Village's Water Filtration Plant.
- Upon dissolution, the former Village will be incorporated into the Town's Water District #3.
- Residents will be responsible for any remaining debt associated with the Village's Water Treatment Plant (WTP), maintenance, and any repairs within the Village's system.
- The Village's WTP will be maintained by the Town's Water and Sewer Operations Department. The Distribution Department will be responsible for the lines of each plant.
- Three Village employees will be transferred to the Town's Water and Sewer Infrastructure and Operations Department.

# Special Districts

## *Sewer*

- Upon dissolution, Village residents will continue to pay sewer fees for use and all associated debt on the Village's Wastewater Treatment Plant.
- The Village would be included in a separate district from the Town to account for the debts divided between the Town and Village.
- Similar to water, the Wastewater Treatment Plant will be maintained by two departments which include operations and infrastructure.
- Three Village employees will be transferred to the Town's Operations and Infrastructure Water and Sewer Departments.



# Special Districts

## Debt

- Created in order to pay off any Village debt incurred prior or due to dissolution.
- Will be paid through a special taxing district by residents within the former Village boundaries.



# Disposition of Village Assets and Liabilities

# Disposition of Village Assets

## Village Asset Values

Asset	Source of Values	Value
Buildings/Property	Building Values	\$13,239,905
DPW Vehicles & Equipment	Insured & Estimated Market Values	\$450,272
Fire Vehicles & Equipment	Insured & Estimated Market Values	\$631,000
Bank Accounts	Statement	\$579,693
Appropriated Fund Balances*	Statement	\$52,000
<b>Total</b>		<b>\$14,952,870</b>

# Disposition of Village Assets

## *Village Asset Values*

- The assessed and insured value replacement costs of the Village's assets and funds total approximately \$14.9 million.
- The most valuable asset is the Village's Sewer Plant and Filtration Plant.
- It is recommended that the Village hold onto all real property, vehicles and equipment in order to assist in the dissolution process and keep equipment and property that will be needed to further service the former Village boundaries.

# Disposition of Village Assets

## *Village-owned Real Property*

Address	Property	Building Value
4303 Main Street	Administration Office	\$478,998
54 Dock Lane	Beach House	\$131,245
54 Dock Lane	Bath House	\$24,977
54 Dock Lane	Bath House	\$16,650
54 Dock Lane	Bath House	\$16,650
54 Dock Lane	Bath House	\$16,650
8 Dock Lane	Sewage Pump House	\$56,613
Pump House Road	Filtration Plant	\$2,249,521
Pump House Road	Storage Tank	\$999,048
Pump House Road	Storage Building	\$53,281
Pump House Road	Chain Fence	\$36,633
Broad Street	Pump House	\$249,761
27 Bulwagga Drive	Building & Ground	\$117,834
27 Bulwagga Drive	Aluminum Dome	\$90,530
27 Bulwagga Drive	Sludge Bed co	\$90,530
27 Bulwagga Drive	Pump House	\$37,362
27 Bulwagga Drive	New Sewer Plant	\$8,375,643
4303 Main St	Highway Garage and Salt Shed	\$175,479
10 Church Street	Fire House	\$22,500
<b>Total</b>		<b>\$13,239,905</b>

# Disposition of Village Assets

## *Village-owned Vehicles/Equipment*

- Insured value of Village-owned vehicles and equipment in 2015 \$1,081,272.
- Village owned vehicles and equipment should be kept to be transferred to the Town in order to continue to serve the Town and former Village boundaries.
- Vehicles/equipment still owned by the Village at the time of dissolution will become the property of the Town of Moriah.

# Disposition of Village Assets

## Bank Accounts, Village Books, and Records

Account Type	Account ID #	Village Fund	Balance (as of 1/31/16)
Checking	....0376	General, Water & Sewer Fund	\$427,607.66
Checking	....2336	Now Public Funds 42	\$3,341.82
Checking	....3865	Capital Fund	\$16,645.99
Checking	....1777	Reg Public Funds 03	\$1,319.00
Checking	....8555	Joint Sewer	\$130,778.64
Checking	....4118	Grant Funds	\$0.00
<b>Total</b>			<b>\$579,693.11</b>

# Disposition of Village Assets

## *Unemployment & Miscellaneous Liabilities*

- A Village employee is currently receiving disability benefits. Costs associated with the claim may need to be accounted for with the debt district if the claim is not concluded by dissolution date.
- The Debt District will cover any other former Village liabilities that may occur prior to the date of dissolution or due to dissolution



# Village Fund Balance and Indebtedness

# Village Fund Balance

## Village of Port Henry Fund Balance

Fund/Purpose	Balance
General	\$52,000
Water (Village-wide)	-
Sewer (Village-wide)	\$17,841
Joint Sewer	-
Total	\$69,841
Total	\$52,000

# Indebtedness

- The Village currently has six bonds totaling \$2,161,084.
- The Village's general debt is approximately \$56,980. This includes existing fire truck debt of \$32,341 and additional debt of \$24,639. The debt of the fire truck is recommended to be paid off prior to dissolution.
- Sewer debt includes the result of a recent capital improvements upgrade. The bond totaled to \$2,378,663 and the current balance owed is \$1,840,589.
- Water debt currently has two bonds in relationship to water treatment plant (WTP) improvements and the reconstruction of the water main. \$263,515 is remaining on the WTP improvements and \$246,000 on the water main reconstruction.

# Village Fund Balance

- The Village is set to incur debt for approximately:

Fund/Service	Outstanding Debt
General	\$56,980
Sewer (Village-wide)	\$1,840,589
Water (Village-wide)	\$509,515
<b>Village TOTAL</b>	<b>\$2,161,084</b>
<b>Village Total Minus Water and Sewer</b>	<b>\$56,980</b>

# How Were Cost Savings Determined?

# How Were Cost Savings Determined?

*The Dissolution Plan considered cost saving solutions while providing continued services upon dissolution:*

- Maintain essential functions & services.
- What costs would be saved upon dissolution?
- What costs are transferred to the Town budget?
- Continued collection of revenues and how?

*Cost Savings are only an estimate. All personnel and services are subject to Town of Moriah approval.*

# Cost of Dissolution

- Estimate of dissolution is approximately \$110,000.
- New York State Local Government Citizens Re-Organization Empowerment Grants – up to \$50,000 both Town & Village.
- 10% local match required (\$5,000 each).
- Costs include: legal fees, drafting required documents, incorporating the Village's Zoning Law and Regulation Parking, creation of the Port Henry Fire District #3, purchasing a sidewalk snowplow, aid in the transfer of the Village's Water and Waste Water Treatment Plants, and fees and salaries related to staff transition.

# Projected Tax Impact

## *Citizen Empowerment Tax Credit (CETC)*

- An incentive provided by New York State when two local governments consolidate.
- Based on a formula of 15% of the combined property tax levy at the time of local governmental consolidation.
- 70% must be used towards the reduction of the tax levy.
- 30% may be used for further tax reduction or capital improvement projects.
- CETC used at discretion of Town.
- CETE amount will be based upon:
  - Village Levy 2015-2016
  - Town Levy 2016



# Projected Tax Impact

## Citizen Empowerment Tax Credit (CETC)

Maximum CETC for Tax Reduction	100%	\$347,234
Minimum CETC for Tax Reduction	70%	\$243,064
Maximum CETC for Capital Improvements	30%	\$104,170

*\*CETC is contingent upon New York State appropriations and not an annual guarantee.*

# Projected Tax Impact

Village Residents	Current Tax Rate	Tax Rate No CETC	Tax Rate 70% CETC	Tax Rate 100% CETC	Current Property Tax	Property Tax Post Dissolution	Property Tax Change	Percent Change
Village Tax	\$11.78 <sup>1</sup>	\$0	\$0	\$0	\$1,177.91	\$0	-	-
Townwide Tax (Genl & Hwy)	\$7.73 <sup>2</sup>	\$10.37	\$9.21	\$8.72	\$773.14	\$1,037.38	\$264.24	34.2%
New Joint Fire District	-	\$1.57	\$1.57	\$1.57	-	\$157.00	-	-
New Debt District	-	\$0.50	\$0.50	\$0.50	-	\$50.00	-	-
<b>Total with NO Special Districts – No CETC</b>	<b>\$19.51</b>	<b>\$10.37</b>	<b>-</b>	<b>-</b>	<b>\$1,951.05</b>	<b>\$1,037.38</b>	<b>(\$913.67)</b>	<b>-46.8%</b>
<b>Total With Special Districts – No CETC</b>	<b>-</b>	<b>\$12.44</b>	<b>-</b>	<b>-</b>	<b>-</b>	<b>\$1,244.34</b>	<b>(\$706.71)</b>	<b>-36.2%</b>
<b>Total CETC with Special Districts – 70%</b>	<b>-</b>	<b>-</b>	<b>\$11.28</b>	<b>-</b>	<b>-</b>	<b>\$1,128.27</b>	<b>(\$822.77)</b>	<b>-42.2%</b>
<b>Total CETC with Special Districts – 100%</b>	<b>-</b>	<b>-</b>	<b>-</b>	<b>\$10.79</b>	<b>-</b>	<b>\$1,078.53</b>	<b>(\$872.52)</b>	<b>-44.7%</b>

Notes: <sup>1</sup> Village of Port Henry FY 2015-2016

<sup>2</sup> Town of Moriah FY 2016

# Projected Tax Impact

Town Residents	Current Tax Rate	Tax Rate No CETC	Tax Rate 70% CETC	Tax Rate 100% CETC	Current Property Tax	Property Tax Post Dissolution	Property Tax Change	Percent Change
Townwide Tax (Genl & Hwy)	\$7.73	\$10.37	\$9.21	\$8.72	\$773.14	\$1,037.38	\$264.24	34.2%
Town Outside of Village Tax (Genl & Hwy)	\$0.73	\$0	\$0	\$0	-	\$0	-	-
<b>Total – No CETC</b>	<b>\$8.46</b>	<b>\$10.37</b>	<b>-</b>	<b>-</b>	<b>\$846.25</b>	<b>\$1,037.38</b>	<b>\$191.13</b>	<b>22.6%</b>
<b>Total CETC – 70%</b>	<b>-</b>	<b>-</b>	<b>\$9.21</b>	<b>-</b>	<b>\$846.25</b>	<b>\$921.31</b>	<b>\$75.06</b>	<b>8.9%</b>
<b>Total CETC – 100%</b>	<b>-</b>	<b>-</b>	<b>-</b>	<b>\$8.72</b>	<b>\$846.25</b>	<b>\$871.56</b>	<b>\$25.32</b>	<b>3%</b>

Notes: \* Slightly different from earlier versions. This is due to the completion and use of the Town's 2016 Budget and the updated Taxable Value for the Town and Town outside the Village.

# Next Steps

- Village to adopt the Dissolution Plan.
- Implementation of Dissolution Plan can begin (recommended to wait past permissive referendum time period).
- For more information: [labergegroup.com/PortHenry/](http://labergegroup.com/PortHenry/)
- Dissolution set for: March 31, 2017

# *Public Comments*