



PREPARING A “FUNDING QUILT” A “HOW-TO” GUIDE FOR PROJECT IMPLEMENTATION



Presented by:

Laberge Group

ALBANY OFFICE:

4 Computer Drive West
Albany, New York 12205
(518) 458-7112

UTICA OFFICE:

5718 Cavanaugh Road
Marcy, New York 13403
(315) 768-6220

www.labergegroup.com



Preparing a Funding Quilt – A “How-To” Guide for Project Implementation



Current Issues Facing Towns In New York





Current Issues Facing Towns In New York



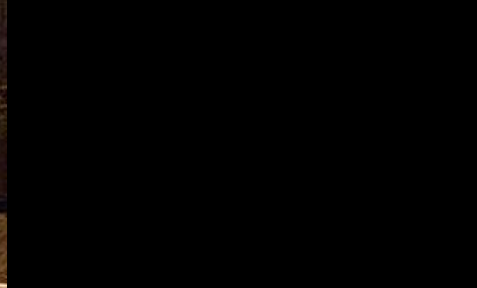


Current Issues Facing Towns In New York





Current Issues Facing Towns In New York





Current Issues Facing Towns In New York





Current Issues Facing Towns In New York





Current Issues Facing Towns In New York



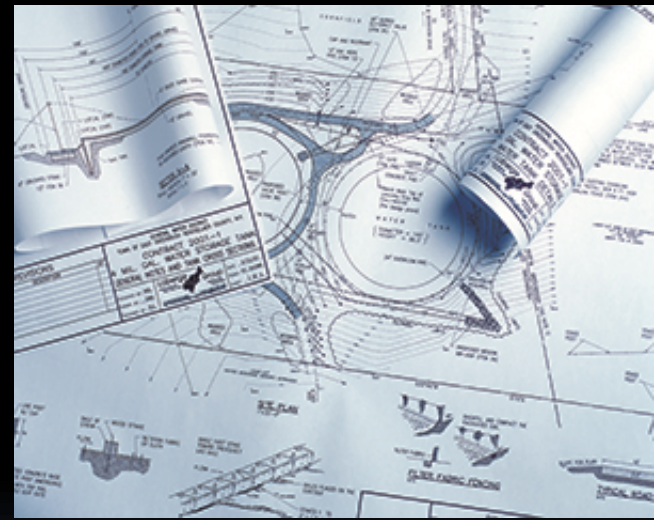


Current Issues Facing Towns In New York



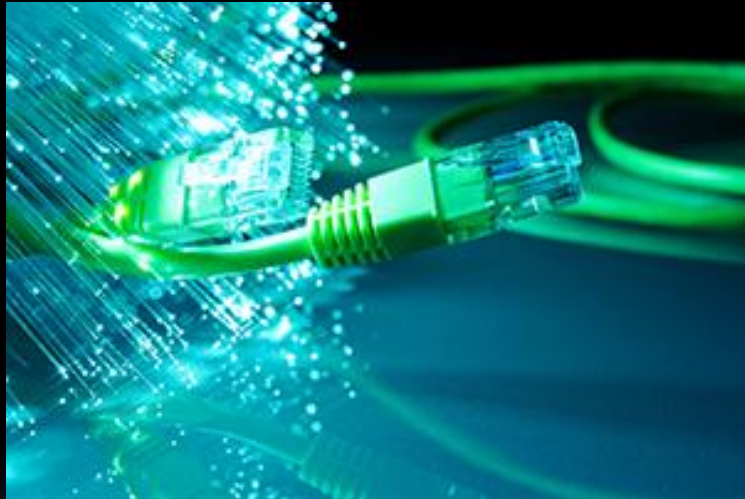


Current Issues Facing Towns In New York





Current Issues Facing Towns In New York





Current Issues Facing Towns In New York





Current Issues Facing Towns In New York





ECONOMIC DEVELOPMENT

ASSESSMENT
GENERATION
RESEARCH
INDUSTRY
EMPLOYMENT
INFORMATION
GENERAL
TRAINING
OPERATION
RESPONSE
EFFECTIVE
COACHMENT
DEVELOPMENT

LEADER
COMMUNICATION
CLIENTS
GROWTH
SUPPORT
DATA
MARKETING
MISSION
WEBSITE
OFFICE
VIRTUAL
NEW RELATION
INNOVATION
INVESTMENT
STRATEGIC
WORLDWIDE
PRODUCT

SMALL BUSINESS PERFORMANCE
COMMERCIAL FORECASTING
PROJECT BUSINESS PLAN
SERVICE PARTNERSHIP
MANAGEMENT
PROFIT CLIENTS
GENERATION
CAREER
TECHNICAL
TEACHING
TRAINING
GENIUS
GENERAL INFORMATION
BUSINESS PLAN
INDUSTRY
EMPLOYMENT
INFORMATION
GENERAL
TRAINING
OPERATION
RESPONSE
EFFECTIVE
COACHMENT
DEVELOPMENT

JOB
SERVICES
BENCHMARK
GROWTH
SUPPORT
DATA
MARKETING
MISSION
WEBSITE
OFFICE
VIRTUAL
NEW RELATION
INNOVATION
INVESTMENT
STRATEGIC
WORLDWIDE
PRODUCT

TRUST
AVAILABLE
PARTNERSHIP
BENCHMARK
GROWTH
SUPPORT
DATA
MARKETING
MISSION
WEBSITE
OFFICE
VIRTUAL
NEW RELATION
INNOVATION
INVESTMENT
STRATEGIC
WORLDWIDE
PRODUCT

EXCELLENT
OK PROFIT
RESOURCES
SALE
MARKET
SUPPORT

VALUATION
GENERAL
TRAINING
OPERATION
RESPONSE
EFFECTIVE
COACHMENT
DEVELOPMENT

SMART
MODERNIZATION
CUSTOMER
WORLDWIDE
PRODUCT

INFORMATION
TECHNOLOGY
MARKETING
MISSION
WEBSITE
OFFICE
VIRTUAL
NEW RELATION
INNOVATION
INVESTMENT
STRATEGIC
WORLDWIDE
PRODUCT

NEW RELATION
INNOVATION
INVESTMENT
STRATEGIC
WORLDWIDE
PRODUCT

TECHNOLOGY
MARKETING
MISSION
WEBSITE
OFFICE
VIRTUAL
NEW RELATION
INNOVATION
INVESTMENT
STRATEGIC
WORLDWIDE
PRODUCT

MISSION
WEBSITE
OFFICE
VIRTUAL
NEW RELATION
INNOVATION
INVESTMENT
STRATEGIC
WORLDWIDE
PRODUCT

OFFICE
VIRTUAL
NEW RELATION
INNOVATION
INVESTMENT
STRATEGIC
WORLDWIDE
PRODUCT

NEW RELATION
INNOVATION
INVESTMENT
STRATEGIC
WORLDWIDE
PRODUCT

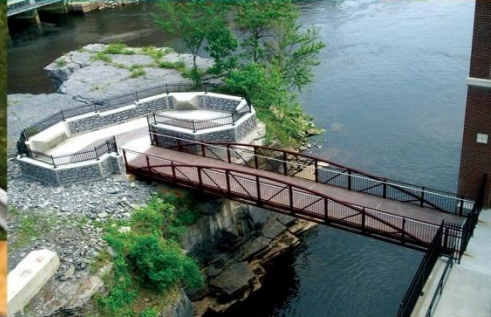
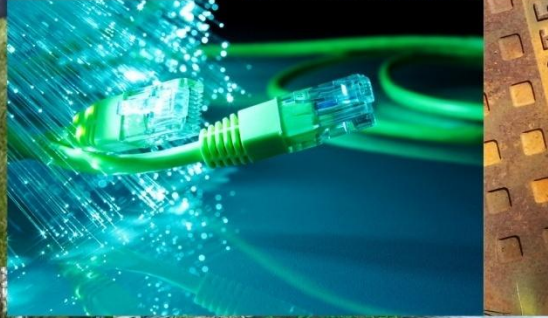
INNOVATION
INVESTMENT
STRATEGIC
WORLDWIDE
PRODUCT

INVESTMENT
STRATEGIC
WORLDWIDE
PRODUCT

STRATEGIC
WORLDWIDE
PRODUCT

WORLDWIDE
PRODUCT

PRODUCT



GRANTS



Yet you are all handcuffed with:

- 2% Property Tax Cap
- Increased Wages
- Increased Pension
- Increased Health Care Costs
- Increased Commodities



What's a local official to do?





ACCESSING STATE FUNDS



ESDC

MRF

LGE

BOA

CDBG

EPF

HOME

FIRE

NYMS

HHS

SRTS

LWRP



EDA

TIP





R>100

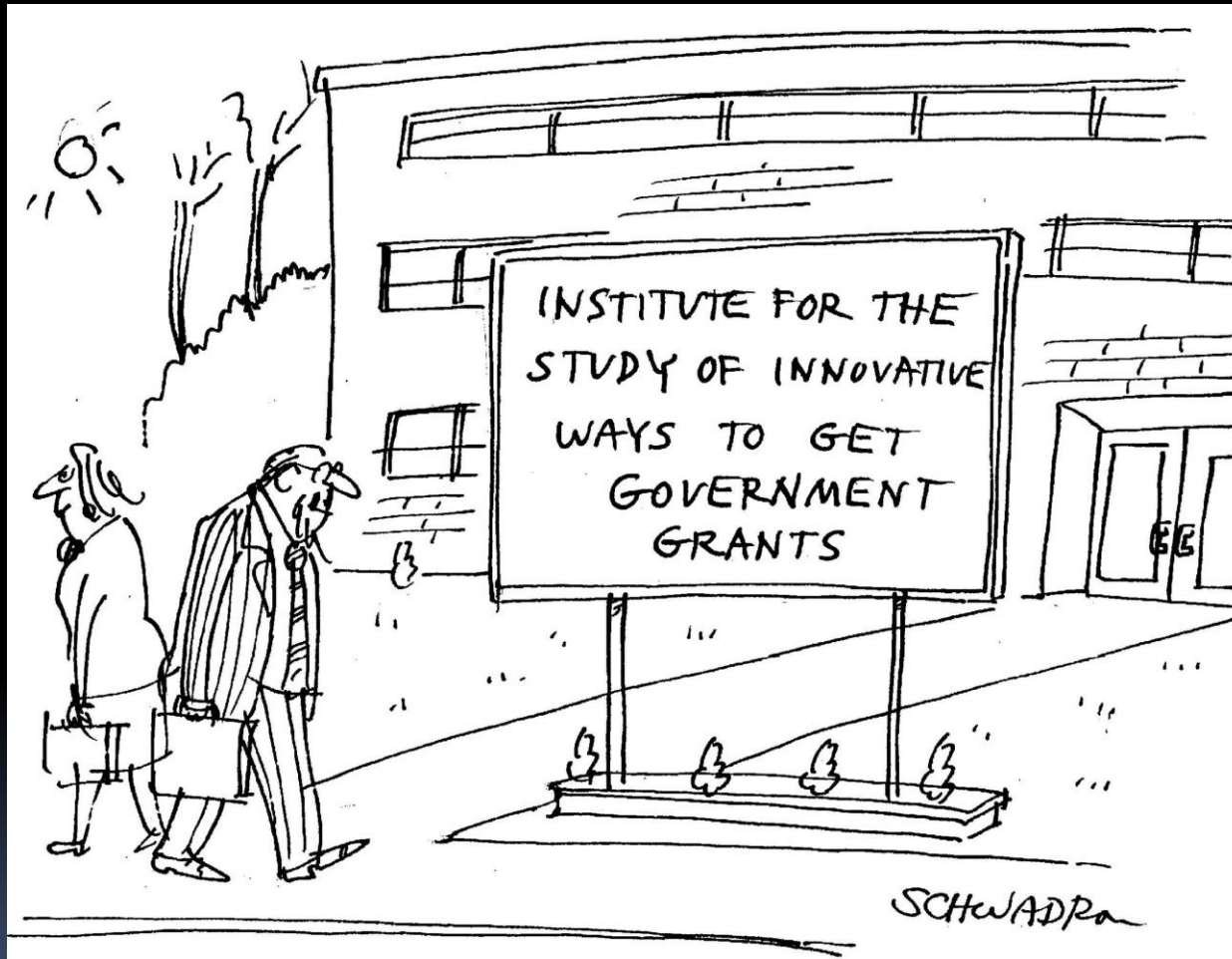
$ab \neq n(3.5xcd)/[\pi^{4.906i}] \times bc^{\sim} 56.1rx \text{ pke } 9243jNM$
 $\{3.4219d\} \times \{\pi dt\} kt11.ort\sim 9bt\}bc^{\sim} 56.1rx \text{ pke } 9243jNM$
 $m2356t\Omega rtkl14 n \times \{3.4219d\}bc^{\sim} 56.1rx \text{ pke } 9243jNM$
 $rk\text{£ } 231 \{3.4219d\}n(3.5xcd)/[\pi^{4.906i}] \times bc^{\sim} n(3.5xcd)$
 $jr5099 \text{ 9d}\} \times \{\pi dt\} 1.ort\sim 9bt\}bc^{\sim} 56.1rx \text{ pke } 9243jNM$
 $/[\pi^{4.906i}] \times bc^{\sim} n(3.5xcd)/[\pi^{4.906i}] \times bc^{\sim} \times \{3.421$
 $9d\}bc^{\sim} \times bc^{\sim} n(3.5xcd)/[\pi^{4.906i}] \times \{3.4219d\}bc^{\sim} 56.1$
 $56.1rx \text{ pke } 9243jNM6i\} \times \{3.4219d\}bc^{\sim} 56.1rx \text{ pke } 924$
 $rk\text{£ } 231 \{3.4219d\}n(3.5xcd)/[\pi^{4.906i}] \times bc^{\sim} n(3.5xcd)$
 $jr5099 /[\pi^{4.906i}] \times bc^{\sim} n(3.5xcd)/[\pi^{4.906i}] \times$
 $\{3.4219d\}bc^{\sim} 56.1rx \text{ pke } 9243jNMjr5099 /[\pi^{4}$
 $231 \{3.219d\}n(3.5xcd)/[\pi^{4.906i}] \times bc^{\sim} n(3.5xcd)$
 $jr5099 /[\pi^{4.906i}] \times bc^{\sim} n(3.5xcd)/[\pi^{4.906i}] \times$
 $bc^{\sim} 56.1rx \text{ pke } 9243jNMrk\text{£ } 231 \{3.4219d\}n(3.5xcd)$
 $/[\pi^{4.906i}] \times bc^{\sim} n(3) kt30 = X$

“It’s a foolproof formula for writing grant applications.”



**“If you’re early, you’re on time.
If you’re on time, you’re late.
If you’re late,
don’t bother showing up.”**

– Vince Lombardi





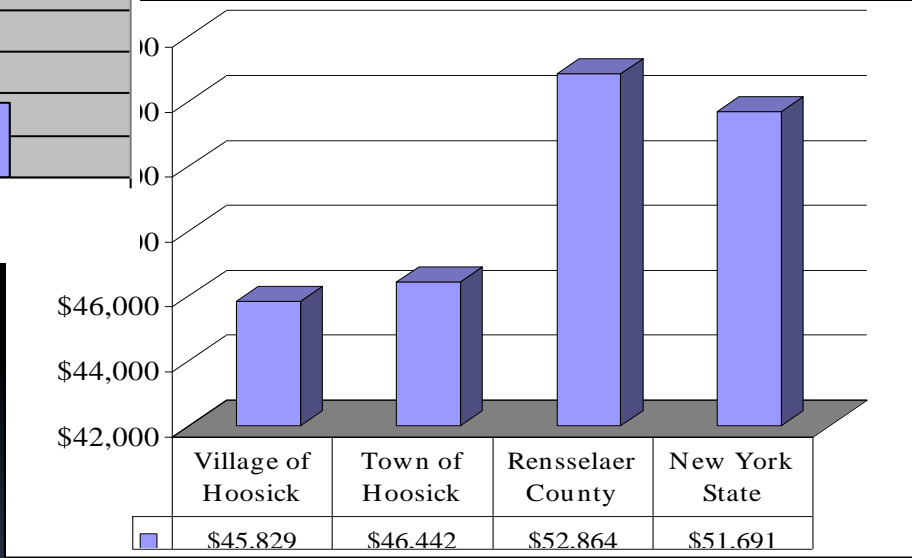
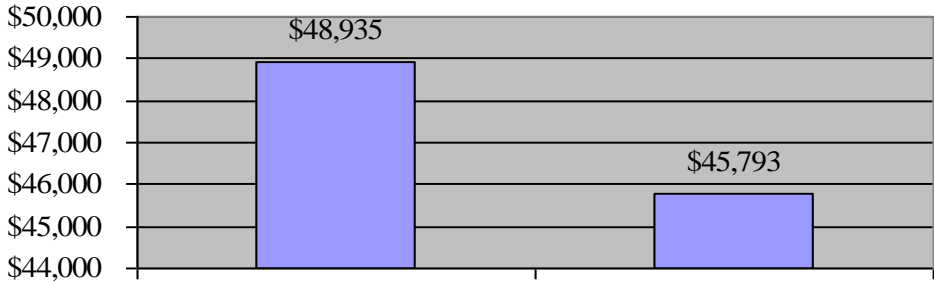
The Key to Successful Grants Starts with a Plan

- Envision It
- Plan It
 - Your Off-Season Training Plan
 - Prioritize
- Implement It



Understand Who You Are

Median Household Income





Public Input





Techniques for Soliciting & Increasing Public Participation

- Church Groups
- Local Clubs
- Sports Organizations
- School Organizations or School Committees
- Neighborhood Associations





Visualize Design Solutions



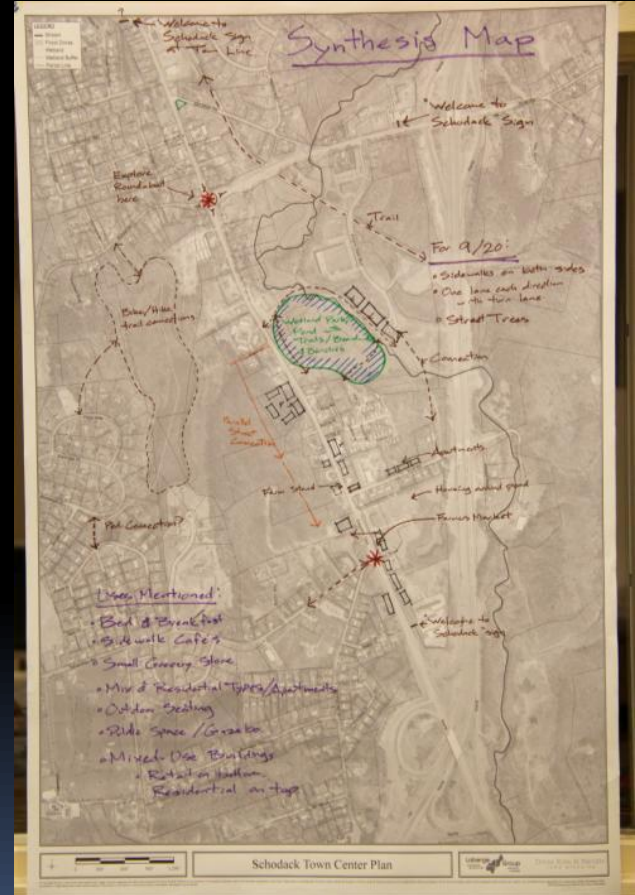


Identify Your Assets & Your Liabilities

Home Hap-Hazard
 Picturesque
 Stuck Negative
Rural
 Boring
 Disjointed
 Wannabe Potential



Walkable
 Quaint
 Maintain-Farms
 Growing Cute-Shops
 Self-Contained
 Industrial Business-Friendly
 Progressive
 Legacy
 Rural-Still Green-Open-Spaces
 More-Small-Town Positive
 Vibrant Thriving Convenient
 Inviting Unified

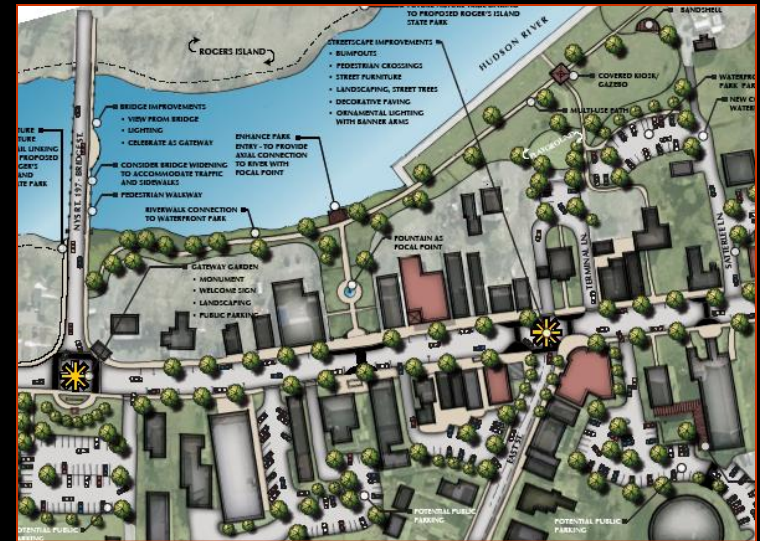






Create Short Term Achievable Goals

- Pedestrian Enhancements.
- Enhance Rte 197 Gateway.
- Enhance Yacht Basin.
- Improve Irving Tissue Entry.
- Plant new street trees.
- Share Parking Areas.
- Infill Development.





Set Long Term Goals





Set Long Term Goals





See How You Fit Into Your REDC/URI plan

UPSTATE REVITALIZATION INITIATIVE

Next-Tech

Gateway

Talent

CAPITAL 20.20
ACCELERATE THE REGION THROUGH FOCUSED INVESTMENT

Metro

Lift-off

OCTOBER 5, 2015



Create a “Funding Quilt” For Each Project



Resources

- Identify possible funding streams that may be available to assist in implementing your projects





Understand the Program Requirements

Program Eligibility

- Eligibility vs. Fundability
- Match Requirement
- Project Timetable

Program Schedule

- Grant Deadlines
- Announcement Dates
- Funding Availability
- Technical Assistance





Develop Project Partners

- Local
- State
- Federal
- Regional Economic Development Council
- Not-for-Profit
- Volunteer Organizations





Research Successful Projects

- What Works vs. What Doesn't Work
- Go to Funding Agencies to Review Prior Applications
- Types of Projects - Does it Fit?
- Project Readiness - Commitment of Other Funds
- Project Documentation
- Public Support
- Dot the *i*'s and Cross the *t*'s
- Meet with Agencies, AGAIN





Create the Funding Quilt



The “Funding Quilt” links the resources that must come together and be interwoven to accomplish an objective.



Thank You!

- **Laberge Group** provides grants preparation, program delivery, and administration services to counties and local government agencies for planning initiatives, housing rehabilitation, economic development, water and sewer infrastructure, parks and recreation, emergency services, municipal buildings, roads, bridges, and bicycle and pedestrian paths, and geographic information systems.
- Since 2000 we have assisted our clients in accessing over **\$140 million in funding!**
Contact us today for a free consultation



Laberge Group

ALBANY OFFICE:

4 Computer Drive West
Albany, New York 12205
(518) 458-7112

UTICA OFFICE:

5718 Cavanaugh Road
Marcy, New York 13403
(315) 768-6220

www.labergegroup.com



Preparing a Funding Quilt – A “How-To” Guide for Project Implementation