



# Village of Colonie Salt Storage Facility





# DPW Location seen from Grace Street in the Village Of Colonie





## Village Vision

- A Building to be proud of.
- Capacity to store a high percentage of annual needs.
- Ability to load undercover.





## Village of Colonie DPW Utilizes and Maintains

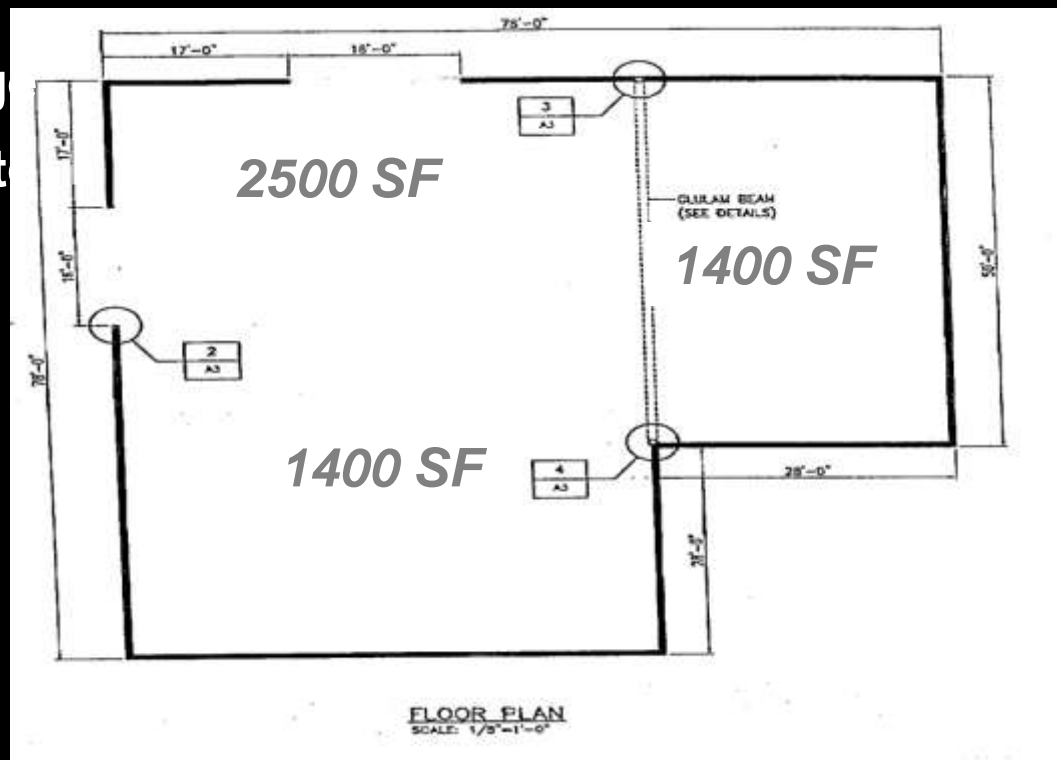
- 1800 tons of salt.
- 500 tons of sand.
- 30 miles of roads.





## Design Concept

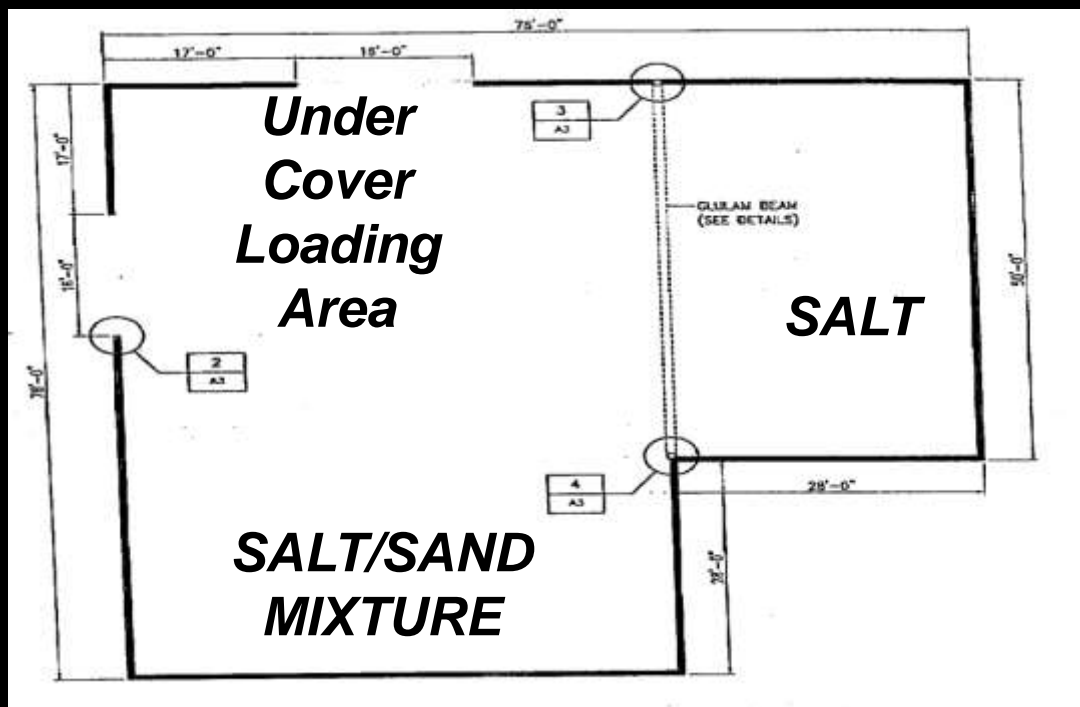
- 2500 square feet of open space reserved for undercover loading or additional storage
- Twin bays will accommodate 65% of annual needs.





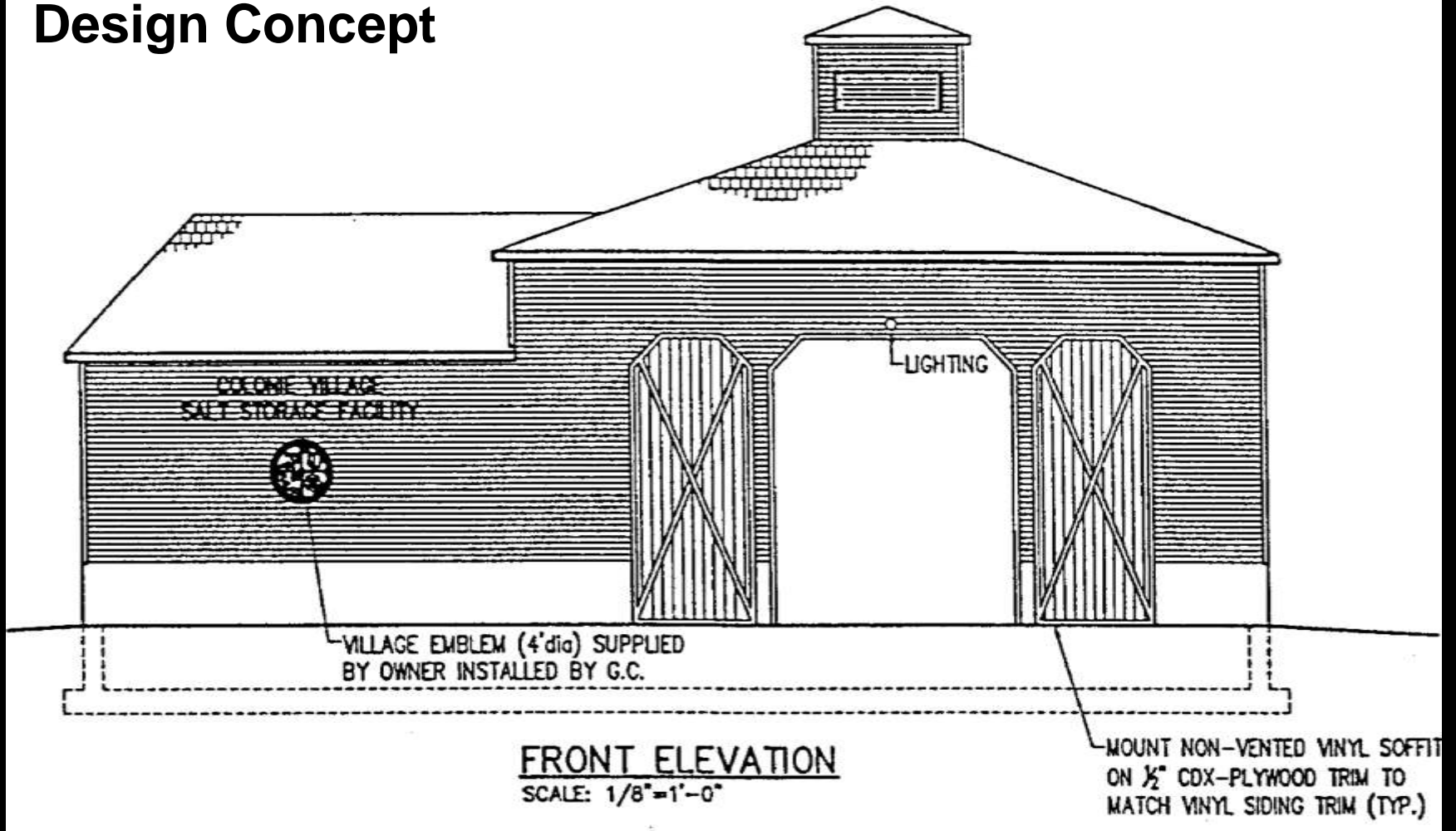
# Design Concept

Segregation of S&I control materials with undercover loading to prevent leaching of salt brine and to improve safety.





# Design Concept





# Finished Product







# Laying the foundation.





## Preparing for a concrete pour.





# Segment of completed wall.





# Placement of stud walls.



# The Glulam Beam.





## Seven foot stud wall for bay area.





# Water proofing membrane installation.





# Paving the flooring.







# Complete the exterior paving.





**Equipment fits easily.**





## Loading under cover.





# Far corner houses a winter mix.





**Completed facility ready for the winter season.**

